

Recombinant Human ENO3 Protein, GST-tagged

Cat. No. ENO3-3316H Lot. No. (See product label)

SPECIFICATION

Product Overview	Human ENO3 full-length ORF (AAH17249, 1 a.a. - 434 a.a.) recombinant protein with GST-tag at N-terminal.
Species	Human
Source	Wheat Germ
Description	This gene encodes one of the three enolase isoenzymes found in mammals. This isoenzyme is found in skeletal muscle cells in the adult where it may play a role in muscle development and regeneration. A switch from alpha enolase to beta enolase occurs in muscle tissue during development in rodents. Mutations in this gene have been associated glycogen storage disease. Alternatively spliced transcript variants encoding different isoforms have been described.[provided by RefSeq, Jul 2010]
Molecular Mass	73.48 kDa
AA Sequence	MAMQKIFAREILDSRGNPTVEVDLHTAKGRFRAAVPSGASTGIYEALELRDGDKGRY LGKGVLKAVENINSTLGPALLQKKLSVADQEKVDKFMIELDGTENKSKFGANAILGVS LAVCKAGAAEKGVPLYRHIADLAGNPDLILPVPAFNVINGGSHAGNKLAMQEFMILPV GASSFKEAMRIGAEVYHHLKGVKAKYGKDATNVGDEGGFAPNILENNEALELLKTAI QAAGYPDKVVIGMDVAASEFYRNGKYDLDFKSPDDPARHITGEKLGELYKSFKNYP VVSIEDPFDQDDWATWTSFSLSGVNIQIVGDDLTVTNPKRFAQAVEKKACNCLLLKVN QIGSVTESIQACKLAQSNWGWVMVSHRSGETEDTFIADLVVGLCTGQIKTGAPCRSE RLAKYNQLMRIIEALGDKAIFAGRKFRNPKAK

 Tel: 1-631-559-9269 1-516-512-3133

 Email: info@creative-biomart.com  Fax: 1-631-938-8127

 45-1 Ramsey Road, Shirley, NY 11967, USA

Applications	Enzyme-linked Immunoabsorbent Assay Western Blot (Recombinant protein) Antibody Production Protein Array
Notes	Best use within three months from the date of receipt of this protein.
Storage	Store at -80 centigrade. Aliquot to avoid repeated freezing and thawing.
Storage Buffer	50 mM Tris-HCl, 10 mM reduced Glutathione, pH=8.0 in the elution buffer.

GENE INFORMATION

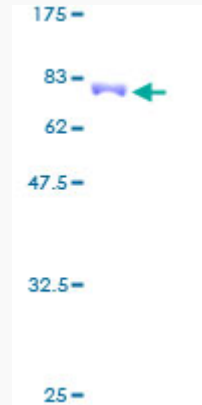
Gene Name	ENO3 enolase 3 (beta, muscle) [Homo sapiens]
Official Symbol	ENO3
Synonyms	ENO3; enolase 3 (beta, muscle); enolase 3, (beta, muscle); beta-enolase; muscle-specific enolase; skeletal muscle enolase; 2-phospho-D-glycerate hydrolyase; MSE; GSD13;
Gene ID	2027
mRNA Refseq	NM_001193503
Protein Refseq	NP_001180432
MIM	131370
UniProt ID	P13929

 Tel: 1-631-559-9269 1-516-512-3133

 Email: info@creative-biomart.com  Fax: 1-631-938-8127

 45-1 Ramsey Road, Shirley, NY 11967, USA

**Quality Control
Testing**



12.5% SDS-PAGE Stained with Coomassie Blue.

 Tel: 1-631-559-9269 1-516-512-3133

 Email: info@creative-biomart.com  Fax: 1-631-938-8127

 45-1 Ramsey Road, Shirley, NY 11967, USA