

Recombinant Human ENO3 protein, His-tagged

Cat. No. ENO3-5280H Lot. No. (See product label)

SPECIFICATION

Product Overview	Recombinant Human ENO3 protein(P13929)(7-432aa), fused to N-terminal His tag, was expressed in E. coli.
Species	Human
Source	E.coli
ProteinLength	7-432aa
Form	If the delivery form is liquid, the default storage buffer is Tris/PBS-based buffer, 5%-50% glycerol. If the delivery form is lyophilized powder, the buffer before lyophilization is Tris/PBS-based buffer, 6% Trehalose, pH 8.0.
Molecular Mass	50.1 kDa
Purity	Greater than 90% as determined by SDS-PAGE.
Storage	Store at -20°C/-80°C upon receipt, aliquoting is necessary for multiple use. Avoid repeated freeze-thaw cycles.
Reconstitution	Please reconstitute protein in deionized sterile water to a concentration of 0.1-1.0 mg/mL. We recommend to add 5-50% of glycerol (final concentration) and aliquot for long-term storage at -20°C/-80°C. Our default final concentration of glycerol is 50%.

 Tel: 1-631-559-9269 1-516-512-3133

 Email: info@creative-biomart.com  Fax: 1-631-938-8127

 45-1 Ramsey Road, Shirley, NY 11967, USA

GENE INFORMATION

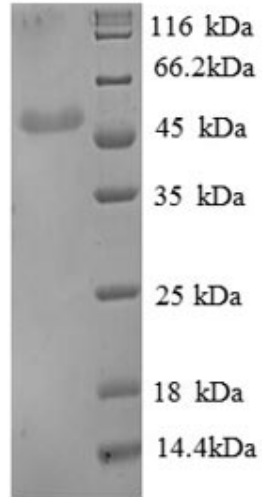
Gene Name	ENO3 enolase 3 (beta, muscle) [Homo sapiens]
Official Symbol	ENO3
Synonyms	ENO3; enolase 3 (beta, muscle); enolase 3, (beta, muscle); beta-enolase; muscle-specific enolase; skeletal muscle enolase; 2-phospho-D-glycerate hydrolyase; MSE; GSD13;
Gene ID	2027
mRNA Refseq	NM_001193503
Protein Refseq	NP_001180432
MIM	131370
UniProt ID	P13929

 Tel: 1-631-559-9269 1-516-512-3133

 Email: info@creative-biomart.com  Fax: 1-631-938-8127

 45-1 Ramsey Road, Shirley, NY 11967, USA

SDS-PAGE



 Tel: 1-631-559-9269 1-516-512-3133

 Email: info@creative-biomart.com  Fax: 1-631-938-8127

 45-1 Ramsey Road, Shirley, NY 11967, USA