

Recombinant Rabbit ENO3 protein, His-tagged

Cat. No. ENO3-6957R Lot. No. (See product label)

SPECIFICATION

Product Overview	Recombinant Rabbit ENO3 aa. (Met3~Lys434 (Accession # P25704)) fused with N-terminal His tag was produced in E. coli cells.
Species	Rabbit
Source	E.coli
ProteinLength	Met3~Lys434
Form	Freeze-dried powder
Molecular Mass	Predicted Molecular Mass: 48.6kDa
Endotoxin	<1.0EU per 1ug (determined by the LAL method)
Purity	>95%
Characteristic	The isoelectric point is 7.3.
Applications	SDS-PAGE; WB; ELISA; IP
Stability	The thermal stability is described by the loss rate. The loss rate was determined by accelerated thermal degradation test, that is, incubate the protein at 37°C for 48h, and no obvious degradation and precipitation were observed. The loss rate is less than 5% within the expiration date under appropriate storage condition.

 Tel: 1-631-559-9269 1-516-512-3133

 Email: info@creative-biomart.com  Fax: 1-631-938-8127

 45-1 Ramsey Road, Shirley, NY 11967, USA

Storage	Avoid repeated freeze/thaw cycles. Store at 2-8°C for one month. Aliquot and store at -80°C for 12 months.
----------------	--

Storage buffer	Supplied as lyophilized form in 20mM Tris, 150mM NaCl, pH8.0, containing 1mM EDTA, 1mM DTT, 0.01% sarcosyl, 5% trehalose, and preservative.
-----------------------	---

Reconstitution	Reconstitute in ddH2O.
-----------------------	------------------------

GENE INFORMATION

Gene Name	ENO3 enolase 3 [<i>Oryctolagus cuniculus</i> (rabbit)]
------------------	--

Official Symbol	ENO3
------------------------	------

Synonyms	ENO3; ENO1; beta-enolase; 2-phospho-D-glycerate hydro-lyase; MSE; beta beta enolase; enolase 1, (alpha); enolase 3 (beta, muscle); muscle-specific enolase; skeletal muscle enolase
-----------------	---

Gene ID	100008769
----------------	-----------

mRNA Refseq	NM_001082085.1
--------------------	----------------

Protein Refseq	NP_001075554.1
-----------------------	----------------

UniProt ID	P25704
-------------------	--------

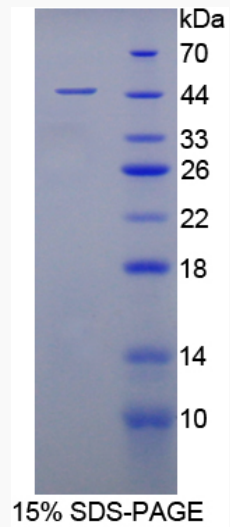
 Tel: 1-631-559-9269 1-516-512-3133

 Email: info@creative-biomart.com  Fax: 1-631-938-8127

 45-1 Ramsey Road, Shirley, NY 11967, USA



SDS-PAGE



Tel: 1-631-559-9269 1-516-512-3133

Email: info@creative-biomart.com Fax: 1-631-938-8127

45-1 Ramsey Road, Shirley, NY 11967, USA