

Recombinant Human ENOPH1 Protein, Myc/DDK-tagged, C13 and N15-labeled

Cat. No. ENOPH1-5490H **Lot. No.** (See product label)

SPECIFICATION

Product Overview	ENOPH1 MS Standard C13 and N15-labeled recombinant protein (NP_067027) with a C-terminal MYC/DDK tag, was expressed in HEK293 cells.
Species	Human
Source	HEK293
Description	Bifunctional enzyme that catalyzes the enolization of 2,3-diketo-5-methylthiopentyl-1-phosphate (DK-MTP-1-P) into the intermediate 2-hydroxy-3-keto-5-methylthiopenteny l-1-phosphate (HK-MTPenyl-1-P), which is then dephosphorylated to form the aciredu cton 1,2-dihydroxy-3-keto-5-methylthiopentene (DHK-MTPene).
Molecular Mass	28.9 kDa
AA Sequence	MVVLSPAEVTVILLDIEGTTTPIAFVKDILFPYIEENVKEYLQTHWEEEECCQQDVSLLRKQAEEDAHLDGAVPIPAASGNGVDDLQQMIQAVVDNVCWQMSLDRKTTALKQLQGHMWRAAFTAGRMKAEFFADVVPVRKWREAGMKVYIYSSGSVEAQKLLFGHSTEGDILELVDGHFDTKIGHKVESESYRKIADSIGCSTNNILFLTDVTREASAAEEADVHVAVVVRPGNAGLTDDEKTYYSLITSFSELYLPSSTTRTRPLEQKLISEEDLAANDILDYKDDDKV
Purity	> 80% as determined by SDS-PAGE and Coomassie blue staining
Stability	Stable for 3 months from receipt of products under proper storage and handling

 Tel: 1-631-559-9269 1-516-512-3133

 Email: info@creative-biomart.com  Fax: 1-631-938-8127

 45-1 Ramsey Road, Shirley, NY 11967, USA

conditions.

Storage Store at -80 centigrade. Avoid repeated freeze-thaw cycles.

Concentration 50 µg/mL as determined by BCA

Storage Buffer 100 mM glycine, 25 mM Tris-HCl, pH 7.3.

GENE INFORMATION

Gene Name ENOPH1 enolase-phosphatase 1 [Homo sapiens (human)]

Official Symbol ENOPH1

Synonyms ENOPH1; enolase-phosphatase 1; enolase-phosphatase E1; acireductone synthase; E1; Enolase phosphatase E1; MASA; MASA homolog; 2,3-diketo-5-methylthio-1-phosphopentane phosphatase; MST145; FLJ12594; DKFZp586M0524;

Gene ID 58478

mRNA Refseq NM_021204

Protein Refseq NP_067027

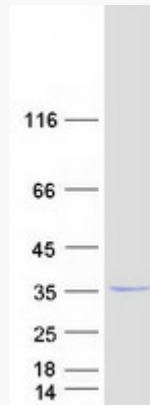
UniProt ID Q9UHY7

 Tel: 1-631-559-9269 1-516-512-3133

 Email: info@creative-biomart.com  Fax: 1-631-938-8127

 45-1 Ramsey Road, Shirley, NY 11967, USA

SDS-PAGE



 Tel: 1-631-559-9269 1-516-512-3133

 Email: info@creative-biomart.com  Fax: 1-631-938-8127

 45-1 Ramsey Road, Shirley, NY 11967, USA