

Recombinant Human ENOPH1 protein, GST-tagged

Cat. No. ENOPH1-84332H Lot. No. (See product label)

SPECIFICATION

Product Overview	Recombinant Human ENOPH1 protein(1-261 aa), fused with N-terminal GST tag, was expressed in E. coli.
Species	Human
Source	E.coli
ProteinLength	1-261 aa
Form	The purified protein was Lyophilized from sterile PBS (58mM Na ₂ HPO ₄ , 17mM NaH ₂ PO ₄ , 68mM NaCl, pH7.4). 5 % trehalose and 5 % mannitol are added as protectant before lyophilization.
Storage	Short-term storage: Store at 2-8°C for (1-2 weeks). Long-term storage: Aliquot and store at -20°C to -80°C for up to 3 months, reconstitution with sterile water and addition of an equal volume of glycerol. Avoid repeat freeze-thaw cycles.
AA Sequence	MVVLSPAEVTVILLDIEGTTTPIAFVKDILFPYIEENVKEYLQTHWEEEEECQQDVSLL RKQAEEDAHLDGAVPIPAASGNGVDDLQQMIQAVVDNVCWQMSLDRKTTALKQLQ GHMWRAAFTAGRMKAEFFADVPAVRKWREAGMKVYIYSSGSVEAQKLLFGHSTE GDILELVDGHFDTKIGHKVESESyrKIADSIGCSTNNILFLTDVTTREASAAEEADVHVA VVVRPGNAGLTDDEKTYYSLITSFSELYLPSST
Purity	85%, by SDS-PAGE with Coomassie Brilliant Blue staining.

 Tel: 1-631-559-9269 1-516-512-3133

 Email: info@creative-biomart.com  Fax: 1-631-938-8127

 45-1 Ramsey Road, Shirley, NY 11967, USA

GENE INFORMATION

Official Symbol ENOPH1

Synonyms

ENOPH1; enolase-phosphatase 1; enolase-phosphatase E1; acireductone synthase; E1; Enolase phosphatase E1; MASA; MASA homolog; 2,3-diketo-5-methylthio-1-phosphopentane phosphatase; MST145; FLJ12594; DKFZp586M0524;

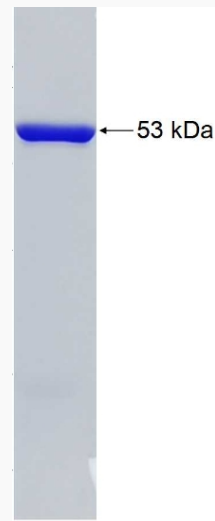
Gene ID 58478

mRNA Refseq NM_021204

Protein Refseq NP_067027

UniProt ID Q9UHY7

SDS-PAGE



 Tel: 1-631-559-9269 1-516-512-3133

 Email: info@creative-biomart.com  Fax: 1-631-938-8127

 45-1 Ramsey Road, Shirley, NY 11967, USA