

Recombinant Human ENPEP Protein, Myc/DDK-tagged

Cat. No. ENPEP-02H Lot. No. (See product label)

SPECIFICATION

Product Overview	Recombinant protein of human glutamyl aminopeptidase (aminopeptidase A) (ENPEP) with a C-Myc/DDK tag was expressed in HEK293T.
Species	Human
Source	HEK293
Description	The ENPEP gene encodes glutamyl aminopeptidase, a type II integral membrane protein with an extracellular zinc-binding domain. This protein can upregulate blood pressure by cleaving the N-terminal aspartate from angiotensin II, and can regulate blood vessel formation and enhance tumorigenesis in some tissues. Along with ANPEP and DPP4, ENPEP was found to be a candidate co-receptor for the coronavirus SARS-CoV-2, which causes COVID-19.
Molecular Mass	109.1 kDa
Purity	>80% as determined by SDS-PAGE and Coomassie blue staining
Stability	Stable for 12 months from the date of receipt of the product under proper storage and handling conditions. Avoid repeated freeze-thaw cycles.
Storage	Store at -80 centigrade.
Concentration	>50 µg/mL as determined by microplate BCA method

 Tel: 1-631-559-9269 1-516-512-3133

 Email: info@creative-biomart.com  Fax: 1-631-938-8127

 45-1 Ramsey Road, Shirley, NY 11967, USA

Storage Buffer 25 mM Tris.HCl, pH 7.3, 100 mM glycine, 10% glycerol

GENE INFORMATION

Gene Name ENPEP glutamyl aminopeptidase [Homo sapiens (human)]

Official Symbol ENPEP

Synonyms ENPEP; glutamyl aminopeptidase; APA; CD249; gp160; glutamyl aminopeptidase; AP-A; EAP; aminopeptidase A; differentiation antigen gp160; EC 3.4.11.7

Gene ID 2028

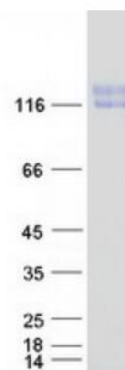
mRNA Refseq NM_001977

Protein Refseq NP_001968

MIM 138297

UniProt ID Q07075

SDS-PAGE



 Tel: 1-631-559-9269 1-516-512-3133

 Email: info@creative-biomart.com  Fax: 1-631-938-8127

 45-1 Ramsey Road, Shirley, NY 11967, USA



Coomassie blue staining of purified ENPEP protein. The protein was produced from HEK293T cells transfected with ENPEP cDNA clone using MegaTran 2.0.

 Tel: 1-631-559-9269 1-516-512-3133

 Email: info@creative-biomart.com  Fax: 1-631-938-8127

 45-1 Ramsey Road, Shirley, NY 11967, USA