

Recombinant Human ENPEP Protein (Glu718-Glu948), N-His tagged

Cat. No. ENPEP-0923H Lot. No. (See product label)

SPECIFICATION

| | |
|-------------------------|---|
| Product Overview | Recombinant Human CD249/ENPEP (Glu718-Glu948) fused with the N-His tag was expressed in E. coli. |
| Species | Human |
| Source | E.coli |
| ProteinLength | Glu718-Glu948 |
| Form | Lyophilized powder/frozen liquid |
| Molecular Mass | 29.23 kDa |
| Purity | >90% as determined by SDS-PAGE. |
| Notes | For research use only. |
| Storage | Use a manual defrost freezer and avoid repeated freeze thaw cycles. Store at 2 to 8 centigrade for one week. Store at -20 to -80 centigrade for twelve months from the date of receipt. |
| Storage Buffer | 0.01M PBS, pH 7.4, 0.02% NLS |
| Reconstitution | Reconstitute in sterile water for a stock solution. |

 Tel: 1-631-559-9269 1-516-512-3133

 Email: info@creative-biomart.com  Fax: 1-631-938-8127

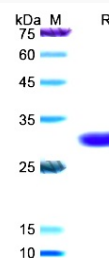
 45-1 Ramsey Road, Shirley, NY 11967, USA

Shipping They are shipped out with dry ice/blue ice unless customers require otherwise.

GENE INFORMATION

| | |
|------------------------|--|
| Gene Name | ENPEP glutamyl aminopeptidase (aminopeptidase A) [Homo sapiens (human)] |
| Official Symbol | ENPEP |
| Synonyms | ENPEP; glutamyl aminopeptidase (aminopeptidase A); glutamyl aminopeptidase; CD249; gp160; EAP; AP-A; aminopeptidase A; differentiation antigen gp160; APA; |
| Gene ID | 2028 |
| mRNA Refseq | NM_001977 |
| Protein Refseq | NP_001968 |
| MIM | 138297 |
| UniProt ID | Q07075 |

SDS-PAGE



Tel: 1-631-559-9269 1-516-512-3133

Email: info@creative-biomart.com Fax: 1-631-938-8127

45-1 Ramsey Road, Shirley, NY 11967, USA