

## Recombinant Human ENPEP protein, His-tagged

Cat. No. ENPEP-274H Lot. No. (See product label)

### SPECIFICATION

<b>Product Overview</b>	Recombinant Human ENPEP protein(NP_001968.3) (Arg41-Gly957) was expressed in Insect Cells with a polyhistidine tag at the N-terminus.
<b>Species</b>	Human
<b>Source</b>	Insect Cells
<b>ProteinLength</b>	41-957 aa
<b>Form</b>	Lyophilized from sterile 20 mM, Tris 500 mM NaCl, 10 % glycerol, pH 7.4.
<b>Molecular Mass</b>	The recombinant human ENPEP consists of 933 amino acids and has a calculated molecular mass of 107.2 kDa. The recombinant protein migrates as an approximately 115.5 kDa band in SDS-PAGE under reducing conditions.
<b>Endotoxin</b>	< 1.0 EU per µg protein as determined by the LAL method.
<b>Purity</b>	> 90 % as determined by SDS-PAGE
<b>Storage</b>	Store it under sterile conditions at -20°C to -80°C upon receiving. Recommend to aliquot the protein into smaller quantities for optimal storage. Avoid repeated freeze-thaw cycles.
<b>Reconstitution</b>	It is recommended that sterile water be added to the vial to prepare a stock solution of 0.2 ug/ul. Centrifuge the vial at 4°C before opening to recover the entire contents.

 Tel: 1-631-559-9269 1-516-512-3133

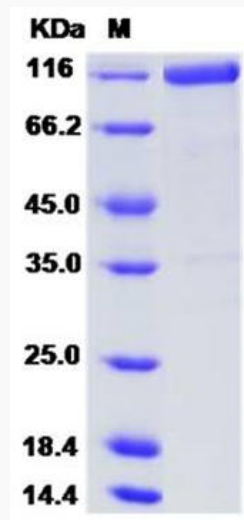
 Email: [info@creative-biomart.com](mailto:info@creative-biomart.com)  Fax: 1-631-938-8127

 45-1 Ramsey Road, Shirley, NY 11967, USA

## GENE INFORMATION

<b>Gene Name</b>	ENPEP glutamyl aminopeptidase (aminopeptidase A) [ Homo sapiens ]
<b>Official Symbol</b>	ENPEP
<b>Synonyms</b>	ENPEP; glutamyl aminopeptidase (aminopeptidase A); glutamyl aminopeptidase; CD249; gp160; EAP; AP-A; aminopeptidase A; differentiation antigen gp160; APA;
<b>Gene ID</b>	2028
<b>mRNA Refseq</b>	NM_001977
<b>Protein Refseq</b>	NP_001968
<b>MIM</b>	138297
<b>UniProt ID</b>	Q07075

### SDS-PAGE



Tel: 1-631-559-9269 1-516-512-3133

Email: [info@creative-biomart.com](mailto:info@creative-biomart.com) Fax: 1-631-938-8127

45-1 Ramsey Road, Shirley, NY 11967, USA