

Recombinant Human ENPEP Protein, Myc/DDK-tagged, C13 and N15-labeled

Cat. No. ENPEP-4601H Lot. No. (See product label)

SPECIFICATION

Product Overview	ENPEP MS Standard C13 and N15-labeled recombinant protein (NP_001968) with a C-terminal MYC/DDK tag, was expressed in HEK293 cells.
Species	Human
Source	HEK293
Description	The ENPEP gene encodes glutamyl aminopeptidase, a type II integral membrane protein with an extracellular zinc-binding domain. This protein can upregulate blood pressure by cleaving the N-terminal aspartate from angiotensin II, and can regulate blood vessel formation and enhance tumorigenesis in some tissues. Along with ANPEP and DPP4, ENPEP was found to be a candidate co-receptor for the coronavirus SARS-CoV-2, which causes COVID-19.
Molecular Mass	109.3 kDa
AA Sequence	MNFAEREGSKRYCIQTKHVAILCAVVVGVGLIVGLAVGLTRSCDSSGDGGPGTAPAP SHLPSSTASPSGPPAQDQDICPASEDESGQWKNFRLPDFVNPVHYDLHVKPLLEED TYTGTVSISINLSAPTRYLWLHLRETRITRLPELKRPSGDQVQVRRCFEYKKQEYVVV EAEELTPSSGDGLYLLTMEFAGWLNGLVGFYRTTYTENGRVKSIVATDHEPTDA RKSFPCFDEPNKKATYTISITHPKEYGALSNNMPVAKEESVDDKWTRTTFEKSVPMS YLVCFAVHQFDSVKRISNSGKPLTIYVQPEQKHTA EYAANITKSVFDYFEEYFAMNYS LPKLDKIAIPDFGTGAMENWGLITYRETNLLYDPKESASSNQQRVATVVAHELHVHQW

 Tel: 1-631-559-9269 1-516-512-3133

 Email: info@creative-biomart.com  Fax: 1-631-938-8127

 45-1 Ramsey Road, Shirley, NY 11967, USA

FGNIVTMDWWEDLWLNEGFASFFEFGLGVNHAETDWQMRDQMLLEDVLPVQEDDS
 LMSSHPIIVTVTTPDEITSVFDGISYSKSSILRMLLEDWIKPENFQKGCQMYLEKYQFK
 NAKTSDFWAALEEASRLPVKEVMDTWTRQMGPVNLVNGVKNITQKRFLLDPRAN
 PSQPPSDLGYTNIPVKWTEDNITSSVLFNRSEKEGITLNSSNPSGNAFLKINPDHIG
 FYRVNIEVATWDSIATASLNHKTFSSADRASLIDDAFALARAQLLDYKVALNLTKYL
 KREENFLPWQRVISAFTYIISMFEEDKELYPMIEEYFQGQVKPIADSLGWNDAGDHV
 TKLLRSSVLGFACKMGDREALNNASSLFEQWLNGTVSLPVNLRLLVYRYGMQNSG
 NEISWNYTLEQYQKTSLAQEKEKLLYGLASVKNVTLLSRYL DLLKDTNLIKTQDVFTVI
 RYISYNSYGKNMAWNWIQLNWDYLVNRYTLNNRNLGRIVTIAEPFNTLQLWQMES
 FFAKYPQAGAGEKPREQVLETVKNNIEWLQHRNTIREWFFNLLESCTRTRPLEQKL
 ISEEDLAANDILDYKDDDDKV

Purity > 80% as determined by SDS-PAGE and Coomassie blue staining

Stability Stable for 3 months from receipt of products under proper storage and handling conditions.

Storage Store at -80 centigrade. Avoid repeated freeze-thaw cycles.

Concentration 50 µg/mL as determined by BCA

Storage Buffer 100 mM glycine, 25 mM Tris-HCl, pH 7.3.

GENE INFORMATION

Gene Name ENPEP glutamyl aminopeptidase [Homo sapiens (human)]

Official Symbol ENPEP

Synonyms ENPEP; glutamyl aminopeptidase (aminopeptidase A); glutamyl aminopeptidase; CD249; gp160; EAP; AP-A; aminopeptidase A; differentiation antigen gp160; APA;

 Tel: 1-631-559-9269 1-516-512-3133

 Email: info@creative-biomart.com  Fax: 1-631-938-8127

 45-1 Ramsey Road, Shirley, NY 11967, USA

Gene ID 2028

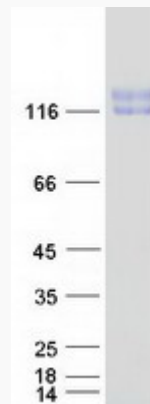
mRNA Refseq NM_001977

Protein Refseq NP_001968

MIM 138297

UniProt ID Q07075

SDS-PAGE



 Tel: 1-631-559-9269 1-516-512-3133

 Email: info@creative-biomart.com  Fax: 1-631-938-8127

 45-1 Ramsey Road, Shirley, NY 11967, USA