

Recombinant Human ENPEP protein, His-tagged

Cat. No. ENPEP-5289H Lot. No. (See product label)

SPECIFICATION

| | |
|-------------------------|---|
| Product Overview | Recombinant Human ENPEP protein(Q07075)(719-949aa), fused to N-terminal His tag, was expressed in E. coli. |
| Species | Human |
| Source | E.coli |
| ProteinLength | 719-949aa |
| Form | If the delivery form is liquid, the default storage buffer is Tris/PBS-based buffer, 5%-50% glycerol. If the delivery form is lyophilized powder, the buffer before lyophilization is Tris/PBS-based buffer, 6% Trehalose, pH 8.0. |
| Molecular Mass | 31 kDa |
| Purity | Greater than 90% as determined by SDS-PAGE. |
| Storage | Store at -20°C/-80°C upon receipt, aliquoting is necessary for mutiple use. Avoid repeated freeze-thaw cycles. |
| Reconstitution | Please reconstitute protein in deionized sterile water to a concentration of 0.1-1.0 mg/mL. We recommend to add 5-50% of glycerol (final concentration) and aliquot for long-term storage at -20°C/-80°C. Our default final concentration of glycerol is 50%. |

 Tel: 1-631-559-9269 1-516-512-3133

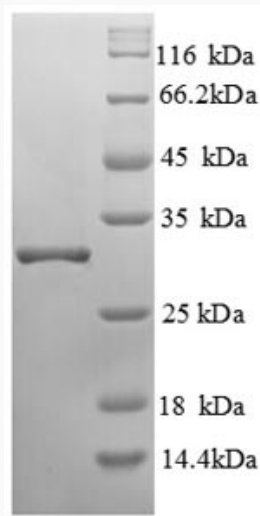
 Email: info@creative-biomart.com  Fax: 1-631-938-8127

 45-1 Ramsey Road, Shirley, NY 11967, USA

GENE INFORMATION

| | |
|------------------------|--|
| Gene Name | ENPEP glutamyl aminopeptidase (aminopeptidase A) [Homo sapiens] |
| Official Symbol | ENPEP |
| Synonyms | ENPEP; glutamyl aminopeptidase (aminopeptidase A); glutamyl aminopeptidase; CD249; gp160; EAP; AP-A; aminopeptidase A; differentiation antigen gp160; APA; |
| Gene ID | 2028 |
| mRNA Refseq | NM_001977 |
| Protein Refseq | NP_001968 |
| MIM | 138297 |
| UniProt ID | Q07075 |

SDS-PAGE



Tel: 1-631-559-9269 1-516-512-3133

Email: info@creative-biomart.com Fax: 1-631-938-8127

45-1 Ramsey Road, Shirley, NY 11967, USA