

Recombinant Human ENPP1 Protein, Myc/DDK-tagged, C13 and N15-labeled

Cat. No. ENPP1-1024H Lot. No. (See product label)

SPECIFICATION

Product Overview	ENPP1 MS Standard C13 and N15-labeled recombinant protein (NP_006199) with a C-terminal MYC/DDK tag, was expressed in HEK293 cells.
Species	Human
Source	HEK293
Description	This gene is a member of the ecto-nucleotide pyrophosphatase/phosphodiesterase (ENPP) family. The encoded protein is a type II transmembrane glycoprotein comprising two identical disulfide-bonded subunits. This protein has broad specificity and cleaves a variety of substrates, including phosphodiester bonds of nucleotides and nucleotide sugars and pyrophosphate bonds of nucleotides and nucleotide sugars. This protein may function to hydrolyze nucleoside 5' triphosphates to their corresponding monophosphates and may also hydrolyze diadenosine polyphosphates. Mutations in this gene have been associated with 'idiopathic' infantile arterial calcification, ossification of the posterior longitudinal ligament of the spine (OPLL), and insulin resistance.
Molecular Mass	99.9 kDa
AA Sequence	MDVGEEPLEKAARARTAKDPNTYKVLVLSVLCVLTITLGCIFGLKPSCAKEVKSCG RCFERTFGNCRCDAAACVELGNCCLDYQETCIEPEHIWTCNKFRFCGEKRLTRSLCAC SDDCKDKGDCCINYSSVCQGEKSWVEEPCESINEPQCPAGFETPPTLLFSLDGFRA EYLHTWGGLLPVISKLKKCGTYTKNMRPVYPTKTFPNHYSIVTGLYPESHGIIDNKMY

 Tel: 1-631-559-9269 1-516-512-3133

 Email: info@creative-biomart.com  Fax: 1-631-938-8127

 45-1 Ramsey Road, Shirley, NY 11967, USA

DPKMNASFSLKSKEKFNPEWYKGEPIWVTAKYQGLKSGTFFWPGSDVEINGIFPDIY
 KMYNGSVPFEEERILAVLQWLQLPKDERPHFYTYLYLEEDSSGHSYGPVSSEVIKALQ
 RVDGMVGMMLMDGLKELNLHRCLNLILISDHGMEQGSCKKYIYLNKYLGDVKNIKVIY
 GPAARLRPSDVPDKYYSFNIEGIARNLSCREPNQHFKPYLKHFLPKRLHFAKSDRIE
 PLTFYLDPQWQLALNPSEKCYCGSGFHGSDNVFSNMQALFVGYGPGFKHGIEADT
 FENIEVYNLMCDLLNLTPAPNNGTHGSLNHLKPNVYTPKHPKEVHPLVQCPFTRNP
 RDNLGCSCNPSILPIEDFQTQFNLTVAEEKIIKHETLPYGRPRVLQKENTICLLSQHQF
 MSGYSQDILMPLWTSYTVDRNDSFSTEDFSNCLYQDFRIPLSPVHKCSFYKNNTKV
 SYGFLSPPQLNKNSSGIYSEALLTTNIVPMYQSFQVIWRYFHDTLLRKYAEERNGVN
 VVSGPVDFDFDYDGRCDSELENLRQKRRVIRNQEILIPTHFFIVLTSCKDTSQTPLHCEN
 LDTLAFILPHRTDNSESCVHGKHDSSWVEELMLHRARITDVEHITGLSFYQQRKEP
 VSDILKCLKTHLPTFSQEDTRTRPLEQKLISEEDLAANDILDYKDDDDKV

Purity > 80% as determined by SDS-PAGE and Coomassie blue staining

Stability Stable for 3 months from receipt of products under proper storage and handling conditions.

Storage Store at -80 centigrade. Avoid repeated freeze-thaw cycles.

Concentration 50 µg/mL as determined by BCA

Storage Buffer 100 mM glycine, 25 mM Tris-HCl, pH 7.3.


GENE INFORMATION

Gene Name ENPP1 ectonucleotide pyrophosphatase/phosphodiesterase 1 [Homo sapiens (human)]

Official Symbol ENPP1

 Tel: 1-631-559-9269 1-516-512-3133

 Email: info@creative-biomart.com  Fax: 1-631-938-8127

 45-1 Ramsey Road, Shirley, NY 11967, USA

Synonyms

ENPP1; ectonucleotide pyrophosphatase/phosphodiesterase 1; M6S1, NPPS, PDNP1; ectonucleotide pyrophosphatase/phosphodiesterase family member 1; PC 1; PCA1; E-NPP 1; Ly-41 antigen; alkaline phosphodiesterase 1; plasma-cell membrane glycoprotein 1; plasma-cell membrane glycoprotein PC-1; membrane component chromosome 6 surface marker 1; phosphodiesterase I/nucleotide pyrophosphatase 1; membrane component, chromosome 6, surface marker 1; M6S1; NPP1; NPPS; PC-1; ARHR2; PDNP1;

Gene ID

5167

mRNA Refseq

NM_006208

Protein Refseq

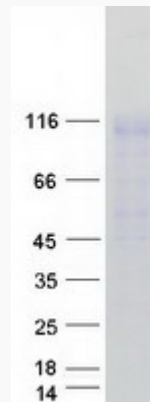
NP_006199

MIM

173335


UniProt ID

P22413

SDS-PAGE


 Tel: 1-631-559-9269 1-516-512-3133

 Email: info@creative-biomart.com  Fax: 1-631-938-8127

 45-1 Ramsey Road, Shirley, NY 11967, USA