

## Recombinant Human ENPP1 protein, His-tagged

Cat. No. ENPP1-1235H Lot. No. (See product label)

### SPECIFICATION

|                         |   |
|-------------------------|---|
| <b>Product Overview</b> | Recombinant Human ENPP-1 Protein is produced by HEK293 cells expression system. The target protein is expressed with sequence (Lys98-Asp925) of human ENPP-1 (Accession #NP_006199.2) fused with a 6xHis tag at the N-terminus. |
| <b>Species</b>          | Human   |
| <b>Source</b>           | HEK293  |
| <b>ProteinLength</b>    | Lys98-Asp925  |
| <b>Form</b>             | Lyophilized from a 0.22 µm filtered solution of PBS, pH 7.4.  |
| <b>Molecular Mass</b>   | 110-115 kDa   |
| <b>Endotoxin</b>        | <1EU/ug   |
| <b>Purity</b>           | > 95% as determined by HPLC   |
| <b>Storage</b>          | Store the lyophilized protein at -20°C to -80°C for 12 months.<br>After reconstitution, the protein solution is stable at -20°C for 3 months, at 2-8°C for up to 1 week.  |
| <b>Reconstitution</b>   | Reconstitute to a concentration of 0.1-0.5 mg/mL in sterile distilled water.  |

### GENE INFORMATION

 Tel: 1-631-559-9269 1-516-512-3133

 Email: [info@creative-biomart.com](mailto:info@creative-biomart.com)  Fax: 1-631-938-8127

 45-1 Ramsey Road, Shirley, NY 11967, USA

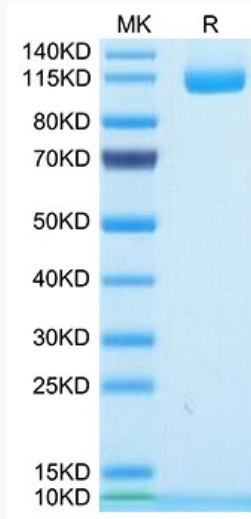
|                        |  |
|------------------------|--|
| <b>Gene Name</b>       | ENPP1 ectonucleotide pyrophosphatase/phosphodiesterase 1 [ Homo sapiens ]  |
| <b>Official Symbol</b> | ENPP1  |
| <b>Synonyms</b>        | ENPP1; ectonucleotide pyrophosphatase/phosphodiesterase 1; M6S1, NPPS, PDNP1; ectonucleotide pyrophosphatase/phosphodiesterase family member 1; PC 1; PCA1; E-NPP 1; Ly-41 antigen; alkaline phosphodiesterase 1; plasma-cell membrane glycoprotein 1; plasma-cell membrane glycoprotein PC-1; membrane component chromosome 6 surface marker 1; phosphodiesterase I/nucleotide pyrophosphatase 1; membrane component, chromosome 6, surface marker 1; M6S1; NPP1; NPPS; PC-1; ARHR2; PDNP1; |
| <b>Gene ID</b>         | 5167   |
| <b>mRNA Refseq</b>     | NM_006208  |
| <b>Protein Refseq</b>  | NP_006199  |
| <b>MIM</b>             | 173335   |
| <b>UniProt ID</b>      | P22413   |

 Tel: 1-631-559-9269 1-516-512-3133

 Email: [info@creative-biomart.com](mailto:info@creative-biomart.com)  Fax: 1-631-938-8127

 45-1 Ramsey Road, Shirley, NY 11967, USA

**SDS-PAGE**



 Tel: 1-631-559-9269 1-516-512-3133

 Email: [info@creative-biomart.com](mailto:info@creative-biomart.com)  Fax: 1-631-938-8127

 45-1 Ramsey Road, Shirley, NY 11967, USA