

Recombinant Human ENPP1 protein, His-tagged

Cat. No. ENPP1-1414H Lot. No. (See product label)

SPECIFICATION

Product Overview	Recombinant Human ENPP1 aa. (Asp362~Trp518 (Accession # P22413) fused with N-terminal His tag was produced in E. coli cells.
Species	Human
Source	E.coli
ProteinLength	Asp362~Trp518
Description	This gene is a member of the ecto-nucleotide pyrophosphatase/phosphodiesterase (ENPP) family. The encoded protein is a type II transmembrane glycoprotein comprising two identical disulfide-bonded subunits. This protein has broad specificity and cleaves a variety of substrates, including phosphodiester bonds of nucleotides and nucleotide sugars and pyrophosphate bonds of nucleotides and nucleotide sugars. This protein may function to hydrolyze nucleoside 5' triphosphates to their corresponding monophosphates and may also hydrolyze diadenosine polyphosphates. Mutations in this gene have been associated with 'idiopathic' infantile arterial calcification, ossification of the posterior longitudinal ligament of the spine (OPLL), and insulin resistance.
Form	Freeze-dried powder
Molecular Mass	Predicted Molecular Mass: 19.8kDa.
Endotoxin	<1.0EU per 1g (determined by the LAL method)

 Tel: 1-631-559-9269 1-516-512-3133

 Email: info@creative-biomart.com  Fax: 1-631-938-8127

 45-1 Ramsey Road, Shirley, NY 11967, USA

Purity	>95%
Characteristic	The isoelectric point is 7.8.
Applications	SDS-PAGE; WB; ELISA; IP.
Stability	The thermal stability is described by the loss rate of the target protein. The loss rate was determined by accelerated thermal degradation test, that is, incubate the protein at 37°C for 48h, and no obvious degradation and precipitation were observed. (Referring from China Biological Products Standard, which was calculated by the Arrhenius equation.) The loss of this protein is less than 5% within the expiration date under appropriate storage condition.
Storage	Avoid repeated freeze/thaw cycles. Store at 2-8°C for one month. Aliquot and store at -80°C for 12 months.
Storage buffer	Supplied as lyophilized form in PBS, pH7.4, containing 5% sucrose, 0.01% sarcosyl.
Reconstitution	Reconstitute in sterile PBS, pH7.2-pH7.4.

GENE INFORMATION

Gene Name	ENPP1 ectonucleotide pyrophosphatase/phosphodiesterase 1 [Homo sapiens (human)]
Official Symbol	ENPP1
Synonyms	ENPP1; ectonucleotide pyrophosphatase/phosphodiesterase 1; M6S1; NPP1; NPPS; PC-1; PCA1; ARHR2; COLED; PDNP1; ectonucleotide pyrophosphatase/phosphodiesterase family member 1; E-NPP 1; Ly-41 antigen; alkaline phosphodiesterase 1; membrane component, chromosome 6, surface marker

 Tel: 1-631-559-9269 1-516-512-3133

 Email: info@creative-biomart.com  Fax: 1-631-938-8127

 45-1 Ramsey Road, Shirley, NY 11967, USA

1; phosphodiesterase I/nucleotide pyrophosphatase 1; plasma-cell membrane glycoprotein 1; plasma-cell membrane glycoprotein PC-1

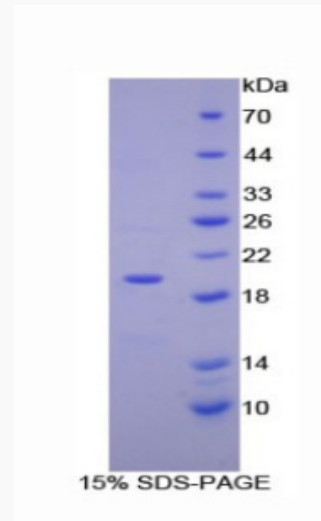
Gene ID 5167

mRNA Refseq NM_006208.2

Protein Refseq NP_006199.2

UniProt ID P22413

SDS-PAGE



 Tel: 1-631-559-9269 1-516-512-3133

 Email: info@creative-biomart.com  Fax: 1-631-938-8127

 45-1 Ramsey Road, Shirley, NY 11967, USA