

## Recombinant Human ENPP1 Protein, GST-tagged

Cat. No. ENPP1-3321H Lot. No. (See product label)

### SPECIFICATION

<b>Product Overview</b>	Human ENPP1 full-length ORF ( NP_006199.1, 1 a.a. - 873 a.a.) recombinant protein with GST-tag at N-terminal.
<b>Species</b>	Human
<b>Source</b>	Wheat Germ
<b>Description</b>	This gene is a member of the ecto-nucleotide pyrophosphatase/phosphodiesterase (ENPP) family. The encoded protein is a type II transmembrane glycoprotein comprising two identical disulfide-bonded subunits. This protein has broad specificity and cleaves a variety of substrates, including phosphodiester bonds of nucleotides and nucleotide sugars and pyrophosphate bonds of nucleotides and nucleotide sugars. This protein may function to hydrolyze nucleoside 5' triphosphates to their corresponding monophosphates and may also hydrolyze diadenosine polyphosphates. Mutations in this gene have been associated with 'idiopathic' infantile arterial calcification, ossification of the posterior longitudinal ligament of the spine (OPLL), and insulin resistance. [provided by RefSeq, Jul 2008]
<b>Molecular Mass</b>	126.3 kDa
<b>AA Sequence</b>	MDVGEEPLEKAARARTAKDPNTYKVLVLSVLCVLTITLGCIFGLKPSCAKEVKSCKG RCFERTFGNCRCDAAACVELGNCCLDYQETCIEPEHIWTCNKFRFCGEKRLTRSLCAC SDDCKDKGDCCINYSSVCQGEKSWVEEPCESINEPQCPAGFETPPTLLFSLDGFRA EYLHTWGGLLPVISKLKKCGTYTKNMRPVYPTKTFPNHYSIVTGLYPESHGIIDNKMY

 Tel: 1-631-559-9269 1-516-512-3133

 Email: [info@creative-biomart.com](mailto:info@creative-biomart.com)  Fax: 1-631-938-8127

 45-1 Ramsey Road, Shirley, NY 11967, USA

DPKMNASFSLKSKEKFNPEWYKGEPiWVTAKYQGLKSGTFFWPGSDVEINGIFPDIY  
 KMYNGSVPFEEERILAVLQWLQLPKDERPHFYTYLYLEEDSSGHSYGPVSSEVIKALQ  
 RVDGMVGMMDGLKELNLHRCLNLILISDHGMEQGSCCKYIYLNKYLGDVKNIKVIY  
 GPAARLRPSDVPDKYYSFNIEGIARNLSCREPNQHFKPYLKHFLPKRLHFAKSDRIE  
 PLTFYLDPQWQLALNPSEKCYCGSGFHGSDNVFSNMQUALFVGYPGPFKHGIEADT  
 FENIEVYNLMCDLLNLTPAPNNGTHGSLNHLKPNVYTPKHPKEVHPLVQCPFTRNP  
 RDNLGCSCNPSILPIEDFQTQFNLTVAEEKIIKHETLPYGRPRVLQKENTICLLSQHQF  
 MSGYSQDILMPLWTSYTVDRNDSFSTEDFSNCLYQDFRIPLSPVHKCSFYKNNTKV  
 SYGFLSPPQLNKNSSGIYSEALLTTNIVPMYQSFQVIWRYFHDTLLRKYAEERNGVN  
 VVSGPVDFDFDYDGRCDSELENLRQKRRVIRNQEILIPTHFFIVLTSCKDTSQTPLHCEN  
 LDTLAFILPHRTDNSESCVHGKHDSSWVEELMLHRARITDVEHITGLSFYQQRKEP  
 VSDILKCLKTHLPTFSQED

**Applications**

Enzyme-linked Immunoabsorbent Assay  
 Western Blot (Recombinant protein)  
 Antibody Production  
 Protein Array

**Notes**

Best use within three months from the date of receipt of this protein.

**Storage**

Store at -80 centigrade. Aliquot to avoid repeated freezing and thawing.

**Storage Buffer**

50 mM Tris-HCl, 10 mM reduced Glutathione, pH=8.0 in the elution buffer.

## GENE INFORMATION

**Gene Name**

ENPP1 ectonucleotide pyrophosphatase/phosphodiesterase 1 [ Homo sapiens ]

**Official Symbol**

ENPP1

**Synonyms**

ENPP1; ectonucleotide pyrophosphatase/phosphodiesterase 1; M6S1, NPPS,

 Tel: 1-631-559-9269 1-516-512-3133

 Email: [info@creative-biomart.com](mailto:info@creative-biomart.com)  Fax: 1-631-938-8127

 45-1 Ramsey Road, Shirley, NY 11967, USA

PDNP1; ectonucleotide pyrophosphatase/phosphodiesterase family member 1; PC 1; PCA1; E-NPP 1; Ly-41 antigen; alkaline phosphodiesterase 1; plasma-cell membrane glycoprotein 1; plasma-cell membrane glycoprotein PC-1; membrane component chromosome 6 surface marker 1; phosphodiesterase I/nucleotide pyrophosphatase 1; membrane component, chromosome 6, surface marker 1; M6S1; NPP1; NPPS; PC-1; ARHR2; PDNP1;

**Gene ID** 5167

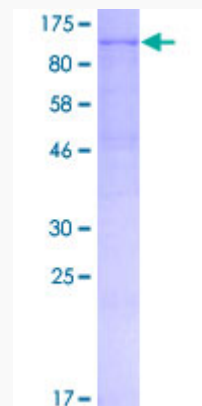
**mRNA Refseq** NM\_006208

**Protein Refseq** NP\_006199

**MIM** 173335

**UniProt ID** P22413

**Quality Control  
Testing**



12.5% SDS-PAGE Stained with Coomassie Blue.

 Tel: 1-631-559-9269 1-516-512-3133

 Email: [info@creative-biomart.com](mailto:info@creative-biomart.com)  Fax: 1-631-938-8127

 45-1 Ramsey Road, Shirley, NY 11967, USA