

Recombinant Full Length Human ENPP3 Protein, C-Flag-tagged

Cat. No. ENPP3-200HFL **Lot. No.** (See product label)

SPECIFICATION

Product Overview	Recombinant Full Length Human ENPP3 Protein, fused to Flag-tag at C-terminus, was expressed in Mammalian cells.
Species	Human
Source	Mammalian Cells
Description	The protein encoded by this gene belongs to a series of ectoenzymes that are involved in hydrolysis of extracellular nucleotides. These ectoenzymes possess ATPase and ATP pyrophosphatase activities and are type II transmembrane proteins. Expression of the related rat mRNA has been found in a subset of immature glial cells and in the alimentary tract. The corresponding rat protein has been detected in the pancreas, small intestine, colon, and liver. The human mRNA is expressed in glioma cells, prostate, and uterus. Expression of the human protein has been detected in uterus, basophils, and mast cells. Two transcript variants, one protein coding and the other non-protein coding, have been found for this gene.
Form	25 mM Tris HCl, pH 7.3, 100 mM glycine, 10% glycerol.
Molecular Mass	99.9 kDa
AA Sequence	MESTLTLATEQPVKKNTLKKYKIACIVLLALLVIMSLGLGLGLGLRKLKLEKQGSCRKCKF DASFRGLENCR CDVACKDRGDCCWDFEDTCVESTRIWMCNKFRCGETRLEASLC SCSDDCLQRKDCCADYKSVCCQGETSWL EENCDAQQSQCPEGFDLPPVILFMSMD

 Tel: 1-631-559-9269 1-516-512-3133

 Email: info@creative-biomart.com  Fax: 1-631-938-8127

 45-1 Ramsey Road, Shirley, NY 11967, USA

GFRAEYLYTWDTLKPNIKLKTCGIHSKYMRAMYPTKTFPNHY TIVTGLYPESHGIID
 NNMYDVNLNKNFSLSSKEQNNPAWWHGQPMWLTAMYQGLKAATYFWPGSEVAIN
 G SFPSIYMPYNGSVPFEEERISTLLKWLDPKAERPRFYTMIFEEPSSGHAGGPVS
 ARVIKALQVVDHAFG MLMEGLKQRNLHNCVNIILLADHGMDQTYCNKMEYMTDYFP
 RINFFYMYEGPAPRIRAHNIPHDFFSFNS EEIVRNLSRKPQDHFKPYLTPDLPKRLH
 YAKNVRIDKVHLFVDQQWLAVRSKSNNTNCGGGNHGYNNEFR SMEAIFLAHGPSFK
 EKTEVEPFENIEVYNLMCDLLRIQPAPNNGTHGSLNHLLKVPFYEPSHAEEVSKFS V
 CGFANPLPTESLDCFCPHLQNSTQLEQVNQMLNLTQEEITATVKVNLFPGRPRVLQK
 NVDHCLLYHREY VSGFGKAMRMPMWSSYTPQLGDTSPLPPTVPDCLRADVRVP
 PSESQKCSFYLADKNITHGFLYPPASNR TSDSQYDALITSNLVPMYEEFRKMWDYF
 HSVLLIKHATERNGVNVVSGPIFDYNYDGHFDAPDEITKHLA NTDVPIPTHYFVVLTS
 CKNKSHTPENCPGWLDVLPFIIPHRPTNVEESCPEGKPEALWVEERFTAHIARVR
 DVELLTGLDFYQDKVQPVSEILQLKTYLPTFETTITRTRPLEQKLISEEDLAANDILDYK
 DDDDKV

Purity	> 80% as determined by SDS-PAGE and Coomassie blue staining.
Stability	Stable for 12 months from the date of receipt of the product under proper storage and handling conditions. Avoid repeated freeze-thaw cycles.
Storage	Store at -80 centigrade.
Concentration	>50 ug/mL as determined by microplate BCA method.
Preparation	Recombinant protein was captured through anti-DDK affinity column followed by conventional chromatography steps.
Protein Families	Druggable Genome, Transmembrane
Protein Pathways	Metabolic pathways, Nicotinate and nicotinamide metabolism, Pantothenate and CoA

 Tel: 1-631-559-9269 1-516-512-3133

 Email: info@creative-biomart.com  Fax: 1-631-938-8127

 45-1 Ramsey Road, Shirley, NY 11967, USA

biosynthesis, Purine metabolism, Riboflavin metabolism, Starch and sucrose metabolism

Full Length Full L.

GENE INFORMATION

Gene Name ENPP3 ectonucleotide pyrophosphatase/phosphodiesterase 3 [Homo sapiens (human)]

Official Symbol ENPP3

Synonyms B10; NPP3; PDNP3; CD203c; PD-IBETA

Gene ID 5169

mRNA Refseq NM_005021.5

Protein Refseq NP_005012.2

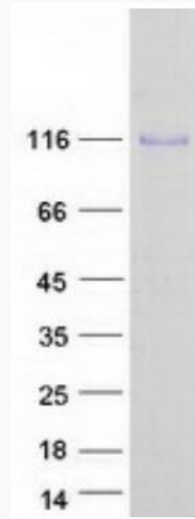
MIM 602182

UniProt ID O14638

 Tel: 1-631-559-9269 1-516-512-3133

 Email: info@creative-biomart.com  Fax: 1-631-938-8127

 45-1 Ramsey Road, Shirley, NY 11967, USA



Coomassie blue staining of purified ENPP3 protein.

 Tel: 1-631-559-9269 1-516-512-3133

 Email: info@creative-biomart.com  Fax: 1-631-938-8127

 45-1 Ramsey Road, Shirley, NY 11967, USA