

Recombinant Cynomolgus monkey ENPP3 protein(46-874aa), His-tagged

Cat. No. ENPP3-6533C Lot. No. (See product label)

SPECIFICATION

Product Overview	Recombinant Cynomolgus monkey ENPP3 protein(A0A2K5TKP4)(46-874aa), fused with N-terminal His tag, was expressed in HEK293.
Species	Cynomolgus
Source	HEK293
ProteinLength	46-874aa
Form	Lyophilized from a 0.2 µm filtered 20 mM Tris-HCl, 0.5 M NaCl, 6% Trehalose, pH 8.0
Bio-activity	Measured by its binding ability in a functional ELISA. Immobilized Macaca fascicularis ENPP3 at 2 µg/mL can bind Anti-ENPP3 recombinant antibody (CSB-RA007681MA1HU), the EC50 is 3.313-4.724 ng/mL.
Molecular Mass	98.7 kDa
Endotoxin	Less than 1.0 EU/ug as determined by LAL method.
Purity	Greater than 95% as determined by SDS-PAGE.
Storage	Store at -20°C/-80°C upon receipt, aliquoting is necessary for mutiple use. Avoid repeated freeze-thaw cycles.

 Tel: 1-631-559-9269 1-516-512-3133

 Email: info@creative-biomart.com  Fax: 1-631-938-8127

 45-1 Ramsey Road, Shirley, NY 11967, USA

Reconstitution

We recommend that this vial be briefly centrifuged prior to opening to bring the contents to the bottom. Please reconstitute protein in deionized sterile water to a concentration of 0.1-1.0 mg/mL. We recommend to add 5-50% of glycerol (final concentration) and aliquot for long-term storage at -20°C/-80°C.

AA Sequence

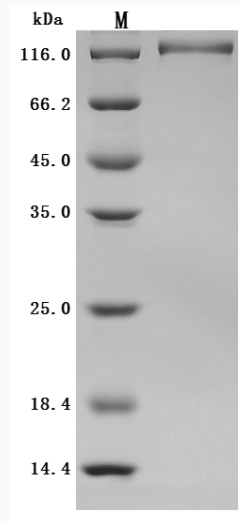
RKLEKQGSCRKKCFDASFRGLENCRCDVACEDRGDCCWDFEDTCVESTRIWTCNK
FRCGETRLEASLCSCSDDCLQRKDCCADYKSVCCGETSWLEENCDAQQSQCP
GFDLPPVILFSMDGFRAEYLYTWDTLMPNINKLKTGHIHSKYMRAMYPTKTFPNHYTI
VTGLYPESHGIIDNNMYDVNLNKNFSLSSSEEQNNPAWWHGQPMWLTAMYQGLKAA
TYFWPGSEVAINGSFPSIYMPYNRSVPYEERISTLLKWLDPKAERPSFYTMIFYE
DSSGHASGPVSARVIKALQVVDHAFGMLMEGLKQRNLHNCVNIILLADHGMDQTYC
NKMEYMTDYFPRINFYMYEGPAPRIRALNVPHDFFSFNSEEIVRNLSKRKPDQHF
KPYLTPDLPKRLHYAKNVRIDKVHLFVDPQWLAVGSKSNTNCGGGNHGYNNEFRS
MEAIFLAHGPSFKEKTEVEPFENIEVYNLMCDLLRIQPAPNNGTRGSLNHLLKVP
FYKPSHAEVSKFSVCGFANPLPTDNLSCLCPHLQNSIQLEQVNQMLNLTQEEITAT
VKVNL PFGRPRVLQKNVDNCLLYHREYVSGFGKAMRMPMWSSYTVPQLGDTSP
LPPTVPD CLRADV RVPPSESQKCSFYLADENITHGFLYPPAINRTSDSQYDALIM
SNLVPMYEE FRKMWDYFHSVLLIKHATERNGVNVVSGPIFDYNYDGHFDAPEEIT
KHIANTDIPIPTH YFVVLTSCKNKSHTPENCPGWLDVLPFIIPHRPTNVE
SCPEGKPEALWVEERLTAHI ARVRDV ELLTGLDFYQDKAQPVSEILQLKTYLPT
FETTI

 Tel: 1-631-559-9269 1-516-512-3133

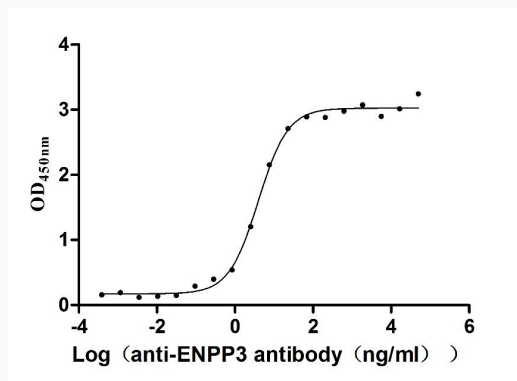
 Email: info@creative-biomart.com  Fax: 1-631-938-8127

 45-1 Ramsey Road, Shirley, NY 11967, USA

SDS-PAGE



Activity



 Tel: 1-631-559-9269 1-516-512-3133

 Email: info@creative-biomart.com  Fax: 1-631-938-8127

 45-1 Ramsey Road, Shirley, NY 11967, USA