

Recombinant Human ENPP4 Protein, GST-tagged

Cat. No. ENPP4-3324H Lot. No. (See product label)

SPECIFICATION

Product Overview	Human ENPP4 full-length ORF (NP_055751.1, 1 a.a. - 453 a.a.) recombinant protein with GST-tag at N-terminal.
Species	Human
Source	Wheat Germ
Description	ENPP4 (Ectonucleotide Pyrophosphatase/Phosphodiesterase 4 (Putative)) is a Protein Coding gene. Among its related pathways are Innate Immune System and Purine metabolism (KEGG). GO annotations related to this gene include sulfuric ester hydrolase activity and bis(5-adenosyl)-triphosphatase activity. An important paralog of this gene is ENPP5.
Molecular Mass	78 kDa
AA Sequence	<p>MKLLVILLFSGELITGFRSDSSSSLPPKLLLVSFDGFRADYLKNYEFPHLQNFKEGVLV EHVKNVFITKTFPNHYSIVTGLYEESHGIVANSMYDAVTKKHFSDSNDKDPFWWNEA VPIWVTNQLQENRSSAAAMWPGTDVPIHDTISSYFMNYNSSVSFEERLNNITMWLN NSNPPVTFATLYWEEPASGHKYGPEDKENMSRVLKKIDDLIGDLVQRLKMLGLWE NLNVIITSDHGMTQCSQDRLINLDSCIDHSYYTLIDLSPVAAILPKINRTEVYNKLNCS PHMNVYLKEDIPNRFYYQHNDRIQPIILVADEGWIVLNESSQKLGDHGYDNSLPSM HPFLAAHGPAFHKGYPKHSTINIVDIYPMMCHILGLKPHPNNGTFGHTKCLLDVQWCIN LPEAIAIVIGSLLVLTMLTCLIIIMQNRLSVPRPFSRLQLQEDDDDDPLIG</p>
Applications	Enzyme-linked Immunoabsorbent Assay

 Tel: 1-631-559-9269 1-516-512-3133

 Email: info@creative-biomart.com  Fax: 1-631-938-8127

 45-1 Ramsey Road, Shirley, NY 11967, USA

Western Blot (Recombinant protein)
 Antibody Production
 Protein Array

Notes	Best use within three months from the date of receipt of this protein.
Storage	Store at -80 centigrade. Aliquot to avoid repeated freezing and thawing.
Storage Buffer	50 mM Tris-HCl, 10 mM reduced Glutathione, pH=8.0 in the elution buffer.

GENE INFORMATION

Gene Name	ENPP4 ectonucleotide pyrophosphatase/phosphodiesterase 4 (putative) [Homo sapiens]
Official Symbol	ENPP4
Synonyms	ectonucleotide pyrophosphatase/phosphodiesterase 4 (putative); 3359; Ensembl:ENSG00000001561; KIAA0879; ectonucleotide pyrophosphatase/phosphodiesterase family member 4;NPP-4;E-NPP 4;ectonucleotide pyrophosphatase/phosphodiesterase 4 (putative function); 3.1.-.-; NPP4
Gene ID	22875
mRNA Refseq	NM_014936
Protein Refseq	NP_055751
MIM	617000

 Tel: 1-631-559-9269 1-516-512-3133

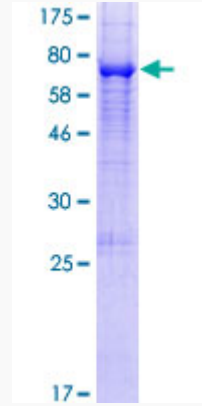
 Email: info@creative-biomart.com  Fax: 1-631-938-8127

 45-1 Ramsey Road, Shirley, NY 11967, USA


UniProt ID

Q9Y6X5

Quality Control
Testing



12.5% SDS-PAGE Stained with Coomassie Blue.

 Tel: 1-631-559-9269 1-516-512-3133

 Email: info@creative-biomart.com  Fax: 1-631-938-8127

 45-1 Ramsey Road, Shirley, NY 11967, USA