

Recombinant Human ENPP5 Protein, GST-tagged

Cat. No. ENPP5-3325H Lot. No. (See product label)

SPECIFICATION

Product Overview	Human ENPP5 full-length ORF (AAH27615, 24 a.a. - 477 a.a.) recombinant protein with GST-tag at N-terminal.
Species	Human
Source	Wheat Germ
Description	This gene encodes a type-I transmembrane glycoprotein. Studies in rat suggest the encoded protein may play a role in neuronal cell communications. Alternatively spliced transcript variants have been described. [provided by RefSeq, Feb 2014]
Molecular Mass	75.68 kDa
AA Sequence	<p>QPDQQKVLLVSFDGFRWDYLYKVPTPHFHYIMKYGVHVKQVTNVFITKTPNHYTLV TGLFAENHGIVANDMFDPIRNKSFSLDHMNIYDSKFWEEATPIWITNQRAGHTSGAA MWPGETDVKIHKRFPTHYMPYNESVSFEDRVAKIIEWFTSKEPINLGLLYWEDPDDM GHHLGPDSPMLGMPVISDIDKGLGYLIQMLKAKLWNTLNLITSDHGMTQCSEERLIEL DQYLDKDHHTLIDQSPVAAILPKEGKFDEVYEALTHAHPNLTVYKKEDVPERWHYKY NSRIQPIIAVADEGWHLQNKSDDFLLGNHGYDNALADMHPIFLAHGPAFRKNFSKEA MNSTDLYPLLCHLLNITAMPHNGSFWNVQDLLNSAMPRVVPYTQSTILLPGSVKPAE YDQEGSYPIYFIGVSLGSIIVIVFFVIFIKHLIHSQIPALQDMHAEIAQPLLQA</p>
Applications	<p>Enzyme-linked Immunoabsorbent Assay Western Blot (Recombinant protein) Antibody Production</p>

 Tel: 1-631-559-9269 1-516-512-3133

 Email: info@creative-biomart.com  Fax: 1-631-938-8127

 45-1 Ramsey Road, Shirley, NY 11967, USA

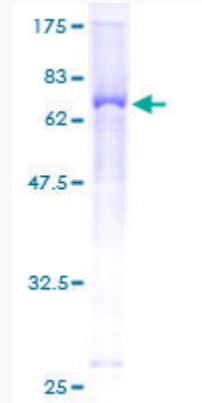
	Protein Array
Notes	Best use within three months from the date of receipt of this protein.
Storage	Store at -80 centigrade. Aliquot to avoid repeated freezing and thawing.
Storage Buffer	50 mM Tris-HCl, 10 mM reduced Glutathione, pH=8.0 in the elution buffer.
GENE INFORMATION	
Gene Name	ENPP5 ectonucleotide pyrophosphatase/phosphodiesterase 5 (putative) [Homo sapiens]
Official Symbol	ENPP5
Synonyms	ENPP5; ectonucleotide pyrophosphatase/phosphodiesterase 5 (putative); ectonucleotide pyrophosphatase/phosphodiesterase family member 5; NPP-5; E-NPP 5; ectonucleotide pyrophosphatase/phosphodiesterase 5 (putative function); KIAA0879;
Gene ID	59084
mRNA Refseq	NM_021572
Protein Refseq	NP_067547
MIM	617001
UniProt ID	Q9UJA9

 Tel: 1-631-559-9269 1-516-512-3133

 Email: info@creative-biomart.com  Fax: 1-631-938-8127

 45-1 Ramsey Road, Shirley, NY 11967, USA

**Quality Control
Testing**



12.5% SDS-PAGE Stained with Coomassie Blue.

 Tel: 1-631-559-9269 1-516-512-3133

 Email: info@creative-biomart.com  Fax: 1-631-938-8127

 45-1 Ramsey Road, Shirley, NY 11967, USA