

Recombinant Human ENPP6 Protein, Myc/DDK-tagged, C13 and N15-labeled

Cat. No. ENPP6-1141H Lot. No. (See product label)

SPECIFICATION

Product Overview	ENPP6 MS Standard C13 and N15-labeled recombinant protein (NP_699174) with a C-terminal MYC/DDK tag, was expressed in HEK293 cells.
Species	Human
Source	HEK293
Description	ENPP6 (Ectonucleotide Pyrophosphatase/Phosphodiesterase 6) is a Protein Coding gene. Diseases associated with ENPP6 include Bietti Crystalline Corneoretinal Dystrophy and Neuropathy, Hereditary Sensory And Autonomic, Type Ia. Among its related pathways are Acyl chain remodelling of PE and PI Metabolism. Gene Ontology (GO) annotations related to this gene include phosphoric diester hydrolase activity and glycerophosphocholine cholinephosphodiesterase activity. An important paralog of this gene is ENPP1.
Molecular Mass	50.2 kDa
AA Sequence	MAVKLGTLALLALGLAQPASARRKLLVFLLDGFRSDYISDEALESPLPGFKEIVSRGV KVDYLTPDFPSLSYPNYYTLMTGRHCEVHQMIGNYMWDPTTNKSFDIGVNKDSLMP LWWNGSEPLWVTLTKAKRKVYMYWPGCEVEILGVRPTYCLEYKNVPTDINFANAV SDALDSFKSGRADLAAIYHERIDVEGHYGPASPQRKDALKAVDVTVLKYMTKWIQER GLQDRLNVIIFSDHGMDIFWMDKVIELNKYISLNDLQQVKDRGPVVS LWPAPGKHS EIYNKLSTVEHMTVYEKEAIPSRFYKKGK FVSPLTLVADEGWFITENREMLPFWMN

 Tel: 1-631-559-9269 1-516-512-3133

 Email: info@creative-biomart.com  Fax: 1-631-938-8127

 45-1 Ramsey Road, Shirley, NY 11967, USA

STGRREGWQRGWHGYDNEI LMDMRGIFLAFGPDFKSNFRAAPIRSVDVYNVMCNV
 VGITPLPNNGSWSRVMCMLKGRASTAPPVWPSHCALALILLFLLATRTRPLEQKLISE
 EDLAANDILDYKDDDDKV

Purity > 80% as determined by SDS-PAGE and Coomassie blue staining

Stability Stable for 3 months from receipt of products under proper storage and handling conditions.

Storage Store at -80 centigrade. Avoid repeated freeze-thaw cycles.

Concentration 50 µg/mL as determined by BCA

Storage Buffer 100 mM glycine, 25 mM Tris-HCl, pH 7.3.

GENE INFORMATION

Gene Name [ENPP6 ectonucleotide pyrophosphatase/phosphodiesterase 6 \[Homo sapiens \(human\) \]](#)

Official Symbol [ENPP6](#)

Synonyms ENPP6; ectonucleotide pyrophosphatase/phosphodiesterase 6; ectonucleotide pyrophosphatase/phosphodiesterase family member 6; MGC33971; NPP-6; E-NPP 6; B830047L21Rik; NPP6;

Gene ID [133121](#)

mRNA Refseq [NM_153343](#)

Protein Refseq [NP_699174](#)

 Tel: 1-631-559-9269 1-516-512-3133

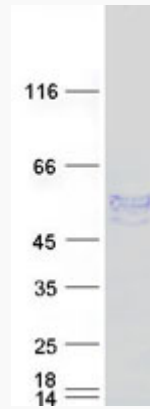
 Email: info@creative-biomart.com  Fax: 1-631-938-8127

 45-1 Ramsey Road, Shirley, NY 11967, USA

MIM 616983

UniProt ID Q6UWR7

SDS-PAGE



 Tel: 1-631-559-9269 1-516-512-3133

 Email: info@creative-biomart.com  Fax: 1-631-938-8127

 45-1 Ramsey Road, Shirley, NY 11967, USA