

Recombinant Human ENPP7 protein, His-tagged

Cat. No. ENPP7-287 Lot. No. (See product label)

SPECIFICATION

Product Overview	Recombinant Human ENPP7 protein(NP_848638.2) (Met 1-Ser 439) was expressed in HEK293, fused with a C-terminal polyhistidine tag.
Species	Human
Source	HEK293
ProteinLength	1-439 aa
Form	Lyophilized from sterile PBS, pH 7.4.
Molecular Mass	The secreted recombinant human ENPP7 comprises 429 amino acids with a predicted molecular mass of 49 kDa. As a result of glycosylation, rh ENPP7 migrates as an approximately 55-60 kDa band in SDS-PAGE under reducing conditions.
Endotoxin	< 1.0 EU per µg of the protein as determined by the LAL method.
Purity	> 95 % as determined by SDS-PAGE
Storage	Store it under sterile conditions at -20°C to -80°C upon receiving. Recommend to aliquot the protein into smaller quantities for optimal storage. Avoid repeated freeze-thaw cycles.
Reconstitution	It is recommended that sterile water be added to the vial to prepare a stock solution of 0.2 ug/ul. Centrifuge the vial at 4°C before opening to recover the entire contents.

 Tel: 1-631-559-9269 1-516-512-3133

 Email: info@creative-biomart.com  Fax: 1-631-938-8127

 45-1 Ramsey Road, Shirley, NY 11967, USA

protein Refseq-Weblink http://www.ncbi.nlm.nih.gov/protein/NP_848638.2

Unit ID Q6UWV6

Unit ID-Weblink <http://www.uniprot.org/uniprot/Q6UWV6>

GENE INFORMATION

Gene Name [ENPP7 ectonucleotide pyrophosphatase/phosphodiesterase 7 \[Homo sapiens \]](#)

Official Symbol [ENPP7](#)

Synonyms ENPP7; ectonucleotide pyrophosphatase/phosphodiesterase 7; ectonucleotide pyrophosphatase/phosphodiesterase family member 7; alk SMase; NPP-7; E-NPP 7; alkaline sphingomyelinase; intestinal alkaline sphingomyelinase; alkaline sphingomyelin phosphodiesterase; ALK-SMase; MGC50179;

Gene ID [339221](#)

mRNA Refseq [NM_178543](#)

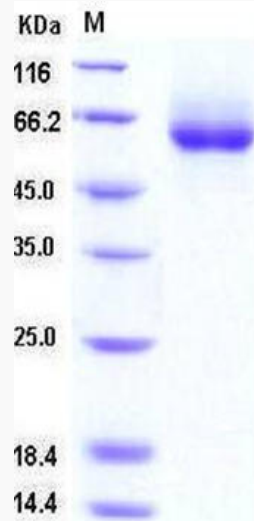
protein Refseq [NP_848638](#)

 Tel: 1-631-559-9269 1-516-512-3133

 Email: info@creative-biomart.com  Fax: 1-631-938-8127

 45-1 Ramsey Road, Shirley, NY 11967, USA

SDS-PAGE



 Tel: 1-631-559-9269 1-516-512-3133

 Email: info@creative-biomart.com  Fax: 1-631-938-8127

 45-1 Ramsey Road, Shirley, NY 11967, USA