

Recombinant Human ENPP7 Protein, GST-tagged

Cat. No. ENPP7-3327H Lot. No. (See product label)

SPECIFICATION

Product Overview	Human ENPP7 full-length ORF (AAH41453.2, 1 a.a. - 458 a.a.) recombinant protein with GST-tag at N-terminal.
Species	Human
Source	Wheat Germ
Description	<p>The protein encoded by this gene is an intestinal alkaline sphingomyelin phosphodiesterase that converts sphingomyelin to ceramide and phosphocholine. The encoded protein is anchored in the cell membrane, and it may function to protect the intestinal mucosa from inflammation and tumorigenesis. This protein is glycosylated and also exhibits lysophosphatidylcholine hydrolase activity. [provided by RefSeq, Oct 2016]</p>
Molecular Mass	77.9 kDa
AA Sequence	<p>MRGPAVLLTVALATLLAPGAGAPVQSQGSQNKLLLVSFDGFRWNYDQDQDTPNLD AMARDGVKARYMTPAFVTMTSPCHFTLVTGKYIENHGVVHNMYNNTTSKVKLPYHA TLGIQRWWDNGSVPIWITAQRQGLRAGSFFYPGGNVTYQGVAVTRSRKEGIAHNYK NETEWRANIDTVMAWFTEEDLDLVTLYFGEPDSTGHRYGPESPERREMVRQVDRT VGYLRESIARNHLTDRNLNLIITSDHGMMTTVDKCRAGDLVEFHKFPNFTFRDIEFELLDYG PNGMLLPKEGRLEKVYDALKDAHPKLVHYKKEAFPEAFHYANNPRVTPLLMYSDLG YVIHGRINVQFNNGEHGFDNKDMDMKTIFRAVGPSFRAGLEVEPFESVHVYELMCR LLGIVPEANDGHLATLLPMLHTESALPPDGRPTLLPKGRSALPPSSRPLLVMGLLGTV</p>

 Tel: 1-631-559-9269 1-516-512-3133

 Email: info@creative-biomart.com  Fax: 1-631-938-8127

 45-1 Ramsey Road, Shirley, NY 11967, USA



	ILLSEVA
Applications	Enzyme-linked Immunoabsorbent Assay Western Blot (Recombinant protein) Antibody Production Protein Array
Notes	Best use within three months from the date of receipt of this protein.
Storage	Store at -80 centigrade. Aliquot to avoid repeated freezing and thawing.
Storage Buffer	50 mM Tris-HCl, 10 mM reduced Glutathione, pH=8.0 in the elution buffer.
GENE INFORMATION	
Gene Name	ENPP7 ectonucleotide pyrophosphatase/phosphodiesterase 7 [Homo sapiens]
Official Symbol	ENPP7
Synonyms	ENPP7; ectonucleotide pyrophosphatase/phosphodiesterase 7; ectonucleotide pyrophosphatase/phosphodiesterase family member 7; alk SMase; NPP-7; E-NPP 7; alkaline sphingomyelinase; intestinal alkaline sphingomyelinase; alkaline sphingomyelin phosphodiesterase; ALK-SMase; MGC50179;
Gene ID	339221
mRNA Refseq	NM_178543
Protein Refseq	NP_848638
MIM	616997

Tel: 1-631-559-9269 1-516-512-3133

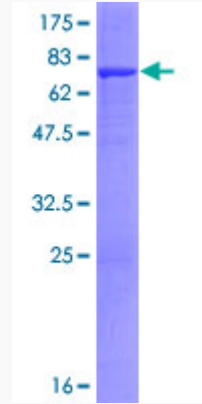
Email: info@creative-biomart.com Fax: 1-631-938-8127

45-1 Ramsey Road, Shirley, NY 11967, USA

UniProt ID

Q6UWV6

Quality Control
Testing



12.5% SDS-PAGE Stained with Coomassie Blue.

 Tel: 1-631-559-9269 1-516-512-3133

 Email: info@creative-biomart.com  Fax: 1-631-938-8127

 45-1 Ramsey Road, Shirley, NY 11967, USA