

Recombinant Human ENSA Protein, Myc/DDK-tagged, C13 and N15-labeled

Cat. No. ENSA-1710H **Lot. No.** (See product label)

SPECIFICATION

Product Overview

ENSA MS Standard C13 and N15-labeled recombinant protein (NP_996925) with a C-terminal MYC/DDK tag, was expressed in HEK293 cells.

Species

Human

Source

HEK293

Description

The protein encoded by this gene belongs to a highly conserved cAMP-regulated phosphoprotein (ARPP) family. This protein was identified as an endogenous ligand for the sulfonylurea receptor, ABCC8/SUR1. ABCC8 is the regulatory subunit of the ATP-sensitive potassium (KATP) channel, which is located on the plasma membrane of pancreatic beta cells and plays a key role in the control of insulin release from pancreatic beta cells. This protein is thought to be an endogenous regulator of KATP channels. In vitro studies have demonstrated that this protein modulates insulin secretion through the interaction with KATP channel, and this gene has been proposed as a candidate gene for type 2 diabetes. At least eight alternatively spliced transcript variants encoding distinct isoforms have been observed.

Molecular Mass

15.1 kDa

AA Sequence

MSQKQEEENPAEETGEEKQDTQEKEGILPERAEEAKLKAKYPSLGQKPGGSDFLMK
RLQKGDYKSLHWSVLLCADEMQKYFDSGDYNMAKAKMKNKQLPSAGPDKNLVTG
DHIPTPQDLPQRKSSLVTSKLAGGQVETRTRPLEQKLISEEDLAANDILDYKDDDDKV

 Tel: 1-631-559-9269 1-516-512-3133

 Email: info@creative-biomart.com  Fax: 1-631-938-8127

 45-1 Ramsey Road, Shirley, NY 11967, USA

Purity	> 80% as determined by SDS-PAGE and Coomassie blue staining
Stability	Stable for 3 months from receipt of products under proper storage and handling conditions.
Storage	Store at -80 centigrade. Avoid repeated freeze-thaw cycles.
Concentration	50 µg/mL as determined by BCA
Storage Buffer	100 mM glycine, 25 mM Tris-HCl, pH 7.3.

GENE INFORMATION

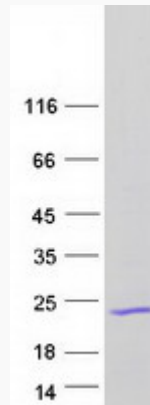
Gene Name	ENSA endosulfine alpha [Homo sapiens (human)]
Official Symbol	ENSA
Synonyms	ENSA; endosulfine alpha; alpha-endosulfine; ARPP 19e; MGC4319; MGC8394; MGC78563; ARPP-19e;
Gene ID	2029
mRNA Refseq	NM_207042
Protein Refseq	NP_996925
MIM	603061
UniProt ID	O43768

 Tel: 1-631-559-9269 1-516-512-3133

 Email: info@creative-biomart.com  Fax: 1-631-938-8127

 45-1 Ramsey Road, Shirley, NY 11967, USA

SDS-PAGE



 Tel: 1-631-559-9269 1-516-512-3133

 Email: info@creative-biomart.com  Fax: 1-631-938-8127

 45-1 Ramsey Road, Shirley, NY 11967, USA