

Recombinant Human ENSA protein, His-tagged

Cat. No. ENSA-28569TH **Lot. No.** (See product label)

SPECIFICATION

Product Overview	Recombinant Human ENSA (Ser2-Glu121) protein was fused to His-tag at N-terminus and expressed in E.coli.
Species	Human
Source	E.coli
ProteinLength	Ser2-Glu121
Description	Alpha-endosulfine (ENSA), a member of the endosulfine family, is also known as ARPP-19e, which is widely expressed with high levels in skeletal muscle and brain and lower levels in the pancreas. ENSA is a protein phosphatase inhibitor that specifically inhibits protein phosphatase 2A (PP2A) during mitosis. When phosphorylated at Ser-67 during mitosis, ENSA is able to specifically interact with PPP2R2D (PR55-delta) and inhibit its activity, leading to inactivation of PP2A, an essential condition to keep cyclin-B1-CDK1 activity high during M phase (By similarity). ENSA acts as a stimulator of insulin secretion by interacting with sulfonylurea receptor (ABCC8), thereby preventing sulfonylurea from binding to its receptor and reducing K(ATP) channel currents.
Predicted N Terminal	Ser2
Form	Lyophilized from 0.22 µm filtered solution in PBS, pH7.4, 10% trehalose.
Molecular Mass	The protein has a calculated MW of 14.2 kDa. The protein migrates as 18 kDa under

 Tel: 1-631-559-9269 1-516-512-3133

 Email: info@creative-biomart.com  Fax: 1-631-938-8127

 45-1 Ramsey Road, Shirley, NY 11967, USA

	reducing (R) condition (SDS-PAGE).
Endotoxin	Less than 1.0 EU per µg by the LAL method.
Purity	>90% as determined by SDS-PAGE.
Storage	<p>For long term storage, the product should be stored at lyophilized state at -20 centigrade or lower.</p> <p>Please avoid repeated freeze-thaw cycles.</p> <p>This product is stable after storage at:</p> <p>-20 to -70 centigrade for 12 months in lyophilized state;</p> <p>-70 centigrade for 3 months under sterile conditions after reconstitution.</p>
Reconstitution	It is recommended that sterile water be added to the vial to prepare a stock solution of 0.2 ug/ul. Centrifuge the vial at 4°C before opening to recover the entire contents.

GENE INFORMATION

Gene Name	ENSA
Official Symbol	ENSA
Synonyms	ENSA; endosulfine alpha; alpha-endosulfine; ARPP 19e; MGC4319; MGC8394; MGC78563; ARPP-19e
Gene ID	2029
mRNA Refseq	NM_004436
Protein Refseq	NP_004427

 Tel: 1-631-559-9269 1-516-512-3133

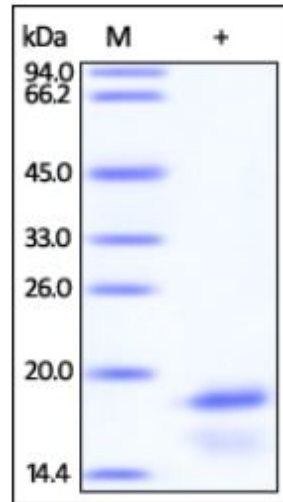
 Email: info@creative-biomart.com  Fax: 1-631-938-8127

 45-1 Ramsey Road, Shirley, NY 11967, USA

MIM 603061

UniProt ID O43768

**SDS-PAGE of ENSA-
28569TH**



Human ENSA, His Tag on SDS-PAGE under reducing (R) condition. The gel was stained overnight with Coomassie Blue. The purity of the protein is greater than 90%.

Tel: 1-631-559-9269 1-516-512-3133

Email: info@creative-biomart.com Fax: 1-631-938-8127

45-1 Ramsey Road, Shirley, NY 11967, USA