

## Recombinant Human ENSA Protein, GST-tagged

Cat. No. ENSA-3328H Lot. No. (See product label)

### SPECIFICATION

|                         |  |
|-------------------------|--|
| <b>Product Overview</b> | Human ENSA full-length ORF ( AAH00436, 1 a.a. - 121 a.a.) recombinant protein with GST-tag at N-terminal.  |
| <b>Species</b>          | Human  |
| <b>Source</b>           | Wheat Germ   |
| <b>Description</b>      | <p>The protein encoded by this gene belongs to a highly conserved cAMP-regulated phosphoprotein (ARPP) family. This protein was identified as an endogenous ligand for the sulfonylurea receptor, ABCC8/SUR1. ABCC8 is the regulatory subunit of the ATP-sensitive potassium (KATP) channel, which is located on the plasma membrane of pancreatic beta cells and plays a key role in the control of insulin release from pancreatic beta cells. This protein is thought to be an endogenous regulator of KATP channels. In vitro studies have demonstrated that this protein modulates insulin secretion through the interaction with KATP channel, and this gene has been proposed as a candidate gene for type 2 diabetes. At least eight alternatively spliced transcript variants encoding distinct isoforms have been observed. [provided by RefSeq, Jul 2008]</p> |
| <b>Molecular Mass</b>   | 39.05 kDa  |
| <b>AA Sequence</b>      | MSQKQEEENPAEETGEEKQDTQEKEGILPERAEEAKLKAKYPSLGQKPGGSDFLMK<br>RLQKGQKYFDSDYNMAKAKMKNKQLPSAGPDKNLVTGDHIPTPQDLQPQRKSSLV<br>TSKLAGGQVE  |

 Tel: 1-631-559-9269 1-516-512-3133

 Email: [info@creative-biomart.com](mailto:info@creative-biomart.com)  Fax: 1-631-938-8127

 45-1 Ramsey Road, Shirley, NY 11967, USA

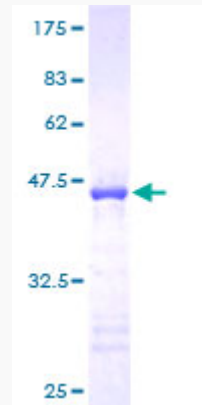
|                         |   |
|-------------------------|---|
| <b>Applications</b>     | Enzyme-linked Immunoabsorbent Assay<br>Western Blot (Recombinant protein)<br>Antibody Production<br>Protein Array |
| <b>Notes</b>            | Best use within three months from the date of receipt of this protein.  |
| <b>Storage</b>          | Store at -80 centigrade. Aliquot to avoid repeated freezing and thawing.  |
| <b>Storage Buffer</b>   | 50 mM Tris-HCl, 10 mM reduced Glutathione, pH=8.0 in the elution buffer.  |
| <b>GENE INFORMATION</b> |   |
| <b>Gene Name</b>        | ENSA endosulfine alpha [ Homo sapiens ]   |
| <b>Official Symbol</b>  | ENSA  |
| <b>Synonyms</b>         | ENSA; endosulfine alpha; alpha-endosulfine; ARPP 19e; MGC4319; MGC8394; MGC78563; ARPP-19e;                       |
| <b>Gene ID</b>          | 2029  |
| <b>mRNA Refseq</b>      | NM_004436   |
| <b>Protein Refseq</b>   | NP_004427   |
| <b>MIM</b>              | 603061  |
| <b>UniProt ID</b>       | O43768  |

 Tel: 1-631-559-9269 1-516-512-3133

 Email: [info@creative-biomart.com](mailto:info@creative-biomart.com)  Fax: 1-631-938-8127

 45-1 Ramsey Road, Shirley, NY 11967, USA

**Quality Control  
Testing**



12.5% SDS-PAGE Stained with Coomassie Blue.

 Tel: 1-631-559-9269 1-516-512-3133

 Email: [info@creative-biomart.com](mailto:info@creative-biomart.com)  Fax: 1-631-938-8127

 45-1 Ramsey Road, Shirley, NY 11967, USA