

Active Recombinant Human ENTPD1 Protein, Fc-tagged

Cat. No. ENTPD1-043H Lot. No. (See product label)

SPECIFICATION

Product Overview	Human CD39 is expressed from mammalian with a charged Fc tag at the N-terminal. It contains Q39-V478.
Species	Human
Source	HEK293
ProteinLength	Q39-V478
Description	CD39, also known as ENTPD1, belongs to the GDA1/CD39 NTPase family. It is expressed primarily on activated lymphoid cells and can also be detected in endothelial tissues. CD39 is involved in the processes of thromboregulation and vascular inflammation. The administration of soluble NTPDase-1 may have therapeutic applications for the treatment of some vascular and transplantation-associated diseases.
Form	Supplied as 0.22um filtered solution in 20mM Tris, 120mM NaCl, 4mM CaCl ₂ , 20% Glycerol (pH7.4).
Bio-activity	Measured by its ability to hydrolyze the 5'-phosphate groups from the substrate adenosine-5'-triphosphate (ATP). The orthophosphate product is measured by a Malachite Green Phosphate Detection Kit. The specific activity is >5,000 pmol/min/g.
Molecular Mass	The protein has a predicted MW of 77.3kDa same as Bis-Tris PAGE. Another band is negative Fc.

 Tel: 1-631-559-9269 1-516-512-3133

 Email: info@creative-biomart.com  Fax: 1-631-938-8127

 45-1 Ramsey Road, Shirley, NY 11967, USA

Endotoxin	Less than 0.05EU per ug by the LAL method.
Purity	> 95% as determined by Bis-Tris PAGE
Storage	The product should be stored at -70°C. Please do not repeated freeze-thaw cycles.
Reconstitution	It is recommended that sterile water be added to the vial to prepare a stock solution of 0.2 ug/ul. Centrifuge the vial at 4°C before opening to recover the entire contents.

GENE INFORMATION

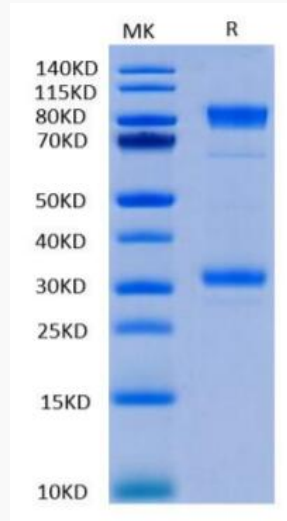
Gene Name	ENTPD1 ectonucleoside triphosphate diphosphohydrolase 1 [Homo sapiens]
Official Symbol	ENTPD1
Synonyms	CD39; CD39EC 3.6.1.5; NTPD1; NTPDase 1; NTPDase-1;ADPase; ATPDase; ATP-diphosphatase; CD39 antigen;DKFZp686D194; DKFZp686I093; EC 3.6.1; ecto-apyrase; Ecto-ATP diphosphohydrolase 1; Ecto-ATPase 1; Ecto-ATPDase 1; ectonucleoside triphosphate diphosphohydrolase 1; ENTPD1; FLJ40921; FLJ40959; Lymphoid cell activation antigen
Gene ID	953
mRNA Refseq	NM_001098175
Protein Refseq	NP_001091645
MIM	601752
UniProt ID	P49961

 Tel: 1-631-559-9269 1-516-512-3133

 Email: info@creative-biomart.com  Fax: 1-631-938-8127

 45-1 Ramsey Road, Shirley, NY 11967, USA

Tris-Bis PAGE



 Tel: 1-631-559-9269 1-516-512-3133

 Email: info@creative-biomart.com  Fax: 1-631-938-8127

 45-1 Ramsey Road, Shirley, NY 11967, USA