

Recombinant Human ENTPD1 Protein (Met1-Tyr340), N-His tagged

Cat. No. ENTPD1-1102H Lot. No. (See product label)

SPECIFICATION

Product Overview	Recombinant Human CD39/ENTPD1 (Met1-Tyr340) fused with the N-His tag was expressed in E. coli.
Species	Human
Source	E.coli
ProteinLength	Met1-Tyr340
Form	Lyophilized powder/frozen liquid
Molecular Mass	40.86 kDa
Purity	>90% as determined by SDS-PAGE.
Notes	For research use only.
Storage	Use a manual defrost freezer and avoid repeated freeze thaw cycles. Store at 2 to 8 centigrade for one week. Store at -20 to -80 centigrade for twelve months from the date of receipt.
Storage Buffer	0.01M PBS, pH 7.4, 0.02% NLS
Reconstitution	Reconstitute in sterile water for a stock solution.

 Tel: 1-631-559-9269 1-516-512-3133

 Email: info@creative-biomart.com  Fax: 1-631-938-8127

 45-1 Ramsey Road, Shirley, NY 11967, USA

Shipping They are shipped out with dry ice/blue ice unless customers require otherwise.

GENE INFORMATION

Gene Name [ENTPD1 ectonucleoside triphosphate diphosphohydrolase 1 \[Homo sapiens \(human\) \]](#)

Official Symbol [ENTPD1](#)

Synonyms ENTPD1; ectonucleoside triphosphate diphosphohydrolase 1; CD39; ATPDase; NTPDase 1; CD39 antigen; ecto-apyrase; ecto-ATPase 1; ecto-ATPDase 1; ecto-ATP diphosphohydrolase 1; lymphoid cell activation antigen; NTPDase-1; FLJ40921; FLJ40959; DKFZp686D194; DKFZp686I093;

Gene ID [953](#)

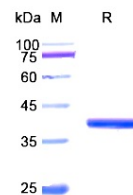
mRNA Refseq [NM_001098175](#)

Protein Refseq [NP_001091645](#)

MIM [601752](#)

UniProt ID [P49961](#)

SDS-PAGE



 Tel: 1-631-559-9269 1-516-512-3133

 Email: info@creative-biomart.com  Fax: 1-631-938-8127

 45-1 Ramsey Road, Shirley, NY 11967, USA