

# Recombinant Human ENTPD1 protein, Fc-tagged, Biotinylated

**Cat. No.** ENTPD1-301HB    **Lot. No.** (See product label)

## SPECIFICATION

<b>Product Overview</b>	Biotinylated Human CD39 is expressed from mammalian with a charged Fc tag at the N-terminal. It contains Q39-V478.
<b>Species</b>	Human
<b>Source</b>	HEK293
<b>ProteinLength</b>	It contains Q39-V478.
<b>Description</b>	CD39, also known as ENTPD1, belongs to the GDA1/CD39 NTPase family. It is expressed primarily on activated lymphoid cells and can also be detected in endothelial tissues. CD39 is involved in the processes of thromboregulation and vascular inflammation. The administration of soluble NTPDase-1 may have therapeutic applications for the treatment of some vascular and transplantation-associated diseases.
<b>Form</b>	Supplied as 0.22um filtered solution in 20mM Tris, 120mM NaCl, 4mM CaCl <sub>2</sub> , 20% Glycerol (pH 7.4).
<b>Molecular Mass</b>	The protein has a predicted MW of 77.3kDa same as Bis-Tris PAGE. Another band is negative Fc.
<b>Endotoxin</b>	Less than 0.01EU per ug by the LAL method.
<b>Purity</b>	> 95% as determined by Bis-Tris PAGE

 Tel: 1-631-559-9269    1-516-512-3133

 Email: [info@creative-biomart.com](mailto:info@creative-biomart.com)     Fax: 1-631-938-8127

 45-1 Ramsey Road, Shirley, NY 11967, USA

<b>Storage</b>	The product should be stored at -70°C. Please do not repeated freeze-thaw cycles.
<b>Reconstitution</b>	It is recommended that sterile water be added to the vial to prepare a stock solution of 0.2 ug/ul. Centrifuge the vial at 4°C before opening to recover the entire contents.
<b>Conjugation</b>	Biotin

## GENE INFORMATION

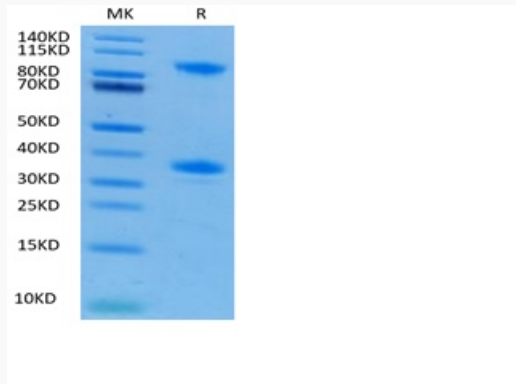
<b>Gene Name</b>	ENTPD1 ectonucleoside triphosphate diphosphohydrolase 1 [ Homo sapiens ]
<b>Official Symbol</b>	ENTPD1
<b>Synonyms</b>	CD39; CD39EC 3. 6. 1. 5; NTPD1; NTPDase 1; NTPDase-1;ADPase; ATPDase; ATP-diphosphatase; CD39 antigen;DKFZp686D194; DKFZp686I093; EC 3. 6. 1; ecto-apyrase; Ecto-ATP diphosphohydrolase 1; Ecto-ATPase 1; Ecto-ATPDase 1; ectonucleoside triphosphate diphosphohydrolase 1; ENTPD1; FLJ40921; FLJ40959; Lymphoid cell activation antigen
<b>Gene ID</b>	953
<b>mRNA Refseq</b>	NM_001098175
<b>Protein Refseq</b>	NP_001091645
<b>MIM</b>	601752
<b>UniProt ID</b>	P49961

 Tel: 1-631-559-9269 1-516-512-3133

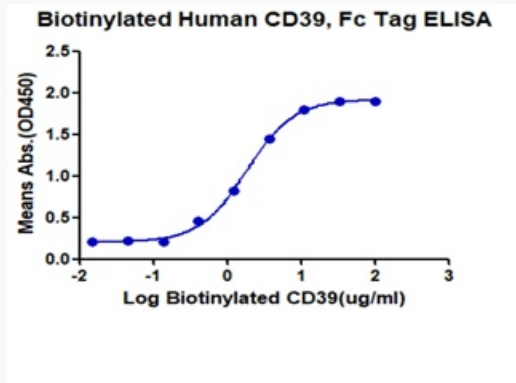
 Email: [info@creative-biomart.com](mailto:info@creative-biomart.com)  Fax: 1-631-938-8127

 45-1 Ramsey Road, Shirley, NY 11967, USA

**Tris-Bis PAGE**



**ELISA data**



 Tel: 1-631-559-9269 1-516-512-3133

 Email: [info@creative-biomart.com](mailto:info@creative-biomart.com)  Fax: 1-631-938-8127

 45-1 Ramsey Road, Shirley, NY 11967, USA