

Recombinant Human ENTPD1 Protein, GST-tagged

Cat. No. ENTPD1-3331H Lot. No. (See product label)

SPECIFICATION

Product Overview	Human ENTPD1 full-length ORF (NP_001767.3, 1 a.a. - 510 a.a.) recombinant protein with GST-tag at N-terminal.
Species	Human
Source	Wheat Germ
Description	The protein encoded by this gene is a plasma membrane protein that hydrolyzes extracellular ATP and ADP to AMP. Inhibition of this protein's activity may confer anticancer benefits. Several transcript variants encoding different isoforms have been found for this gene. [provided by RefSeq, Aug 2015]
Molecular Mass	84.4 kDa
AA Sequence	MEDTKESNVKTFCSKNILAILGFSSIIAVIALLAVGLTQNKALPENVKYGIVLDAGSSHT SLYIYKWPAEKENDTGVVHQVEECRVKGGPGISKFVQKVNEIGIYLTDCMERAREVIP RSQHQETPVYLGATAGMRLLRMESEELADRVLDVVERSLSNYPDFDQGARIIITGQE EGAYGWITINYLLGKFSQKTRWFSIVPYETNNQETFGALDLGGASTQVTFVPQNQTI ESPDNALQFRLYGKDYNVYTHSFLCYGKDQALWQKLAQDIQVASNEILRDPCFHPG YKKVVNVSDLYKTPCTKRFEMTLPFQQFEIQGIGNYQQCHQSILELFNTSYCPYSQC AFNGIFLPLQGDFGAFSAFYFVMKFLNLTSEKVSQEKVTEMMKKFCAQPWEEIKTS YAGVKEKYLSEYCFSGTYILSLLLQGYHFTADSWEHIFIGKIQGS DAGWTLGYMLNL TNMIPAEQPLSTPLSHSTYVFLMVLFSVLVFTVAIIGLLIFHKPSYFWKDMV
Applications	Enzyme-linked Immunoabsorbent Assay

Tel: 1-631-559-9269 1-516-512-3133

Email: info@creative-biomart.com Fax: 1-631-938-8127

45-1 Ramsey Road, Shirley, NY 11967, USA

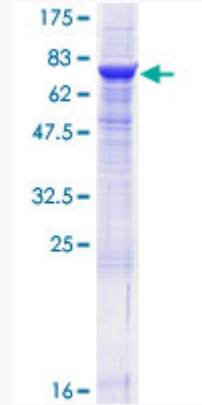
	Western Blot (Recombinant protein) Antibody Production Protein Array
Notes	Best use within three months from the date of receipt of this protein.
Storage	Store at -80 centigrade. Aliquot to avoid repeated freezing and thawing.
Storage Buffer	50 mM Tris-HCl, 10 mM reduced Glutathione, pH=8.0 in the elution buffer.
GENE INFORMATION	
Gene Name	ENTPD1 ectonucleoside triphosphate diphosphohydrolase 1 [Homo sapiens]
Official Symbol	ENTPD1
Synonyms	ENTPD1; ectonucleoside triphosphate diphosphohydrolase 1; CD39; ATPDase; NTPDase 1; CD39 antigen; ecto-apyrase; ecto-ATPase 1; ecto-ATPDase 1; ecto-ATP diphosphohydrolase 1; lymphoid cell activation antigen; NTPDase-1; FLJ40921; FLJ40959; DKFZp686D194; DKFZp686I093;
Gene ID	953
mRNA Refseq	NM_001098175
Protein Refseq	NP_001091645
MIM	601752
UniProt ID	P49961

 Tel: 1-631-559-9269 1-516-512-3133

 Email: info@creative-biomart.com  Fax: 1-631-938-8127

 45-1 Ramsey Road, Shirley, NY 11967, USA

**Quality Control
Testing**



12.5% SDS-PAGE Stained with Coomassie Blue.

 Tel: 1-631-559-9269 1-516-512-3133

 Email: info@creative-biomart.com  Fax: 1-631-938-8127

 45-1 Ramsey Road, Shirley, NY 11967, USA