

Recombinant Human ENTPD1 Protein, Myc/DDK-tagged, C13 and N15-labeled

Cat. No. ENTPD1-5802H **Lot. No.** (See product label)

SPECIFICATION

Product Overview	ENTPD1 MS Standard C13 and N15-labeled recombinant protein (NP_001767) with a C-terminal MYC/DDK tag, was expressed in HEK293 cells.
Species	Human
Source	HEK293
Description	The protein encoded by this gene is a plasma membrane protein that hydrolyzes extracellular ATP and ADP to AMP. Inhibition of this protein's activity may confer anticancer benefits. Several transcript variants encoding different isoforms have been found for this gene.
Molecular Mass	58 kDa
AA Sequence	MEDTKESNVKTFCSKNILAILGFSSIIAVIALLAVGLTQNKALPENVKYGIVLDAGSSHT SLYIYKWPAEKENDTGVVHQVEECRVKGGPGISKFVQKVNEIGIYLTDCMERAREVIP RSQHQETPVYLGATAGMRLLRMESEELADRVLVDVVERSLSNYPDFDQGARIIITGQE EGAYGWITINILLGKFSQKTRWFSIVPYETNNQETFGALDLGGASTQVTFVPQNQTI ESPDNALQFRLYGKDYNVYTHSFLCYGKDQALWQKLAKDIQVASNEILRDPCFHPG YKKVVNVSDLYKTPCTKRFEMTLPFQQFEIQGIGNYQQCHQSILELFNTSYCPYSQC AFNGIFLPLQGDFGAFSAFYFVMKFLNLTSEKVSQEKVTEMMKKFCAQPWEEIKTS YAGVKEKYLSEYCFSGTYILSLLLQGYHFTADSWEHIHFIGKIQGS DAGWTLGYMLNL TNMIPAEQPLSTPLSHSTYVFLMVLFSVLVFTVAIIGLLIFHKPSYFWKDMVTRTRPLE

 Tel: 1-631-559-9269 1-516-512-3133

 Email: info@creative-biomart.com  Fax: 1-631-938-8127

 45-1 Ramsey Road, Shirley, NY 11967, USA



QKLISEEDLAANDILDYKDDDDKV

Purity > 80% as determined by SDS-PAGE and Coomassie blue staining

Stability Stable for 3 months from receipt of products under proper storage and handling conditions.

Storage Store at -80 centigrade. Avoid repeated freeze-thaw cycles.

Concentration 50 µg/mL as determined by BCA

Storage Buffer 100 mM glycine, 25 mM Tris-HCl, pH 7.3.

GENE INFORMATION

Gene Name [ENTPD1 ectonucleoside triphosphate diphosphohydrolase 1 \[Homo sapiens \(human\) \]](#)

Official Symbol [ENTPD1](#)

Synonyms ENTPD1; ectonucleoside triphosphate diphosphohydrolase 1; CD39; ATPDase; NTPDase 1; CD39 antigen; ecto-apyrase; ecto-ATPase 1; ecto-ATPDase 1; ecto-ATP diphosphohydrolase 1; lymphoid cell activation antigen; NTPDase-1; FLJ40921; FLJ40959; DKFZp686D194; DKFZp686I093;

Gene ID [953](#)

mRNA Refseq [NM_001776](#)

Protein Refseq [NP_001767](#)

Tel: 1-631-559-9269 1-516-512-3133

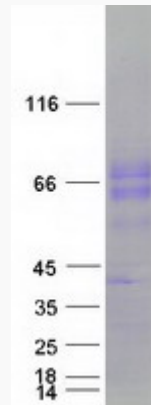
Email: info@creative-biomart.com Fax: 1-631-938-8127

45-1 Ramsey Road, Shirley, NY 11967, USA

MIM 601752

UniProt ID P49961

SDS-PAGE



 Tel: 1-631-559-9269 1-516-512-3133

 Email: info@creative-biomart.com  Fax: 1-631-938-8127

 45-1 Ramsey Road, Shirley, NY 11967, USA