

Recombinant Full Length Human ENTPD1 Protein, C-Flag-tagged

Cat. No. ENTPD1-908HFL **Lot. No.** (See product label)

SPECIFICATION

Product Overview	Recombinant Full Length Human ENTPD1 Protein, fused to Flag-tag at C-terminus, was expressed in Mammalian cells.
Species	Human
Source	Mammalian Cells
Description	The protein encoded by this gene is a plasma membrane protein that hydrolyzes extracellular ATP and ADP to AMP. Inhibition of this protein's activity may confer anticancer benefits. Several transcript variants encoding different isoforms have been found for this gene.
Form	25 mM Tris HCl, pH 7.3, 100 mM glycine, 10% glycerol.
Molecular Mass	57.8 kDa
AA Sequence	MEDTKESNVKTFCSKNILAILGFSSIIAVIALLAVGLTQNKALPENVKYGIVLDAGSSHT SLYIYKWPAE KENDTGVVHQVEECRVKGGPGISKFVQKVNEIGIYLTDCMERAREVIP RSQHQETPVYLGATAGMRLLRME SEELADRVLDDVVERSLSNYPDFQGARIITGQE EGAYGWITINYLKGFSSQKTRWFSIVPYETNNQETFG ALDLGGASTQVTFVFPQNQTI ESPDNALQFRLYGKDYNVYTHSFLCYGKDQALWQKLAKDIQVASNEILRD PCFHFG YKKVVNVSDLYKTPCTKRFEMTLPFQQFEIQGIGNYQQCHQSILELFNTSYCPYSQC AFNGIFL PPLQGDFGAFSAFYFVMKFLNLTSEKVSQEKVTEMMKKFCAQPWEEIKT SYAGVKEKYLSEYCFSGTYIL SLLLQGYHFTADSWEHIFIGKIQGSDAGWTLGYML

 Tel: 1-631-559-9269 1-516-512-3133

 Email: info@creative-biomart.com  Fax: 1-631-938-8127

 45-1 Ramsey Road, Shirley, NY 11967, USA

NLTNMIPAEQPLSTPLSHSTYVFLMVLFSVLFT
VAIIGLLIFHKPSYFWKDMVTRTRPLEQKLISEEDLAANDILDYKDDDDKV

Purity	> 80% as determined by SDS-PAGE and Coomassie blue staining.
Stability	Stable for 12 months from the date of receipt of the product under proper storage and handling conditions. Avoid repeated freeze-thaw cycles.
Storage	Store at -80 centigrade.
Concentration	>50 ug/mL as determined by microplate BCA method.
Preparation	Recombinant protein was captured through anti-DDK affinity column followed by conventional chromatography steps.
Protein Families	Transmembrane
Protein Pathways	Purine metabolism, Pyrimidine metabolism
Full Length	Full L.

GENE INFORMATION

Gene Name	ENTPD1 ectonucleoside triphosphate diphosphohydrolase 1 [Homo sapiens (human)]
Official Symbol	ENTPD1
Synonyms	CD39; SPG64; ATPDase; NTPDase-1
Gene ID	953

 Tel: 1-631-559-9269 1-516-512-3133

 Email: info@creative-biomart.com  Fax: 1-631-938-8127

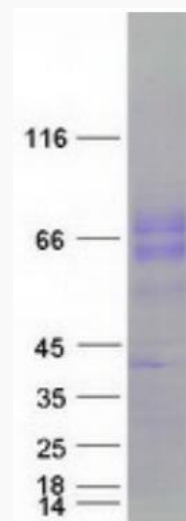
 45-1 Ramsey Road, Shirley, NY 11967, USA

mRNA Refseq [NM_001776.6](#)

Protein Refseq [NP_001767.3](#)

MIM [601752](#)

UniProt ID [P49961](#)



Coomassie blue staining of purified ENTPD1 protein.

 Tel: 1-631-559-9269 1-516-512-3133

 Email: info@creative-biomart.com  Fax: 1-631-938-8127

 45-1 Ramsey Road, Shirley, NY 11967, USA