

## Recombinant Human ENTPD2 Protein, GST-tagged

**Cat. No.** ENTPD2-3332H    **Lot. No.** (See product label)

### SPECIFICATION

<b>Product Overview</b>	Human ENTPD2 partial ORF ( NP_982293.1, 187 a.a. - 275 a.a.) recombinant protein with GST-tag at N-terminal.
<b>Species</b>	Human
<b>Source</b>	Wheat Germ
<b>Description</b>	The protein encoded by this gene is the type 2 enzyme of the ecto-nucleoside triphosphate diphosphohydrolase family (E-NTPDase). E-NTPDases are a family of ecto-nucleosidases that hydrolyze 5'-triphosphates. This ecto-ATPase is an integral membrane protein. Alternative splicing of this gene results in multiple transcript variants. [provided by RefSeq, Jul 2008]
<b>Molecular Mass</b>	35.53 kDa
<b>AA Sequence</b>	GRWFRPRKGTLGAMD LGGASTQITFETTSPAEDRASEVQLHLYGQHYRVYTHSFLC YGRDQVLQRLLASALQTHGFHPCWPRGFSTQVL
<b>Applications</b>	Enzyme-linked Immunoabsorbent Assay Western Blot (Recombinant protein) Antibody Production Protein Array
<b>Notes</b>	Best use within three months from the date of receipt of this protein.

 Tel: 1-631-559-9269    1-516-512-3133

 Email: [info@creative-biomart.com](mailto:info@creative-biomart.com)     Fax: 1-631-938-8127

 45-1 Ramsey Road, Shirley, NY 11967, USA

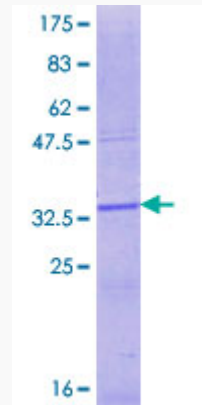
<b>Storage</b>	Store at -80 centigrade. Aliquot to avoid repeated freezing and thawing.
<b>Storage Buffer</b>	50 mM Tris-HCl, 10 mM reduced Glutathione, pH=8.0 in the elution buffer.
<b>GENE INFORMATION</b>	
<b>Gene Name</b>	ENTPD2 ectonucleoside triphosphate diphosphohydrolase 2 [ Homo sapiens ]
<b>Official Symbol</b>	ENTPD2
<b>Synonyms</b>	ENTPD2; ectonucleoside triphosphate diphosphohydrolase 2; CD39L1; CD39 like 1; ecto ATPase; NTPDase 2; ecto-ATPase 2; ecto-ATPDase 2; CD39 antigen-like 1; ecto-ATP diphosphohydrolase 2; NTPDase-2;
<b>Gene ID</b>	954
<b>mRNA Refseq</b>	NM_001246
<b>Protein Refseq</b>	NP_001237
<b>MIM</b>	602012
<b>UniProt ID</b>	Q9Y5L3

 Tel: 1-631-559-9269 1-516-512-3133

 Email: [info@creative-biomart.com](mailto:info@creative-biomart.com)  Fax: 1-631-938-8127

 45-1 Ramsey Road, Shirley, NY 11967, USA

**Quality Control  
Testing**



12.5% SDS-PAGE Stained with Coomassie Blue.

 Tel: 1-631-559-9269 1-516-512-3133

 Email: [info@creative-biomart.com](mailto:info@creative-biomart.com)  Fax: 1-631-938-8127

 45-1 Ramsey Road, Shirley, NY 11967, USA