

Active Recombinant Human ENTPD2 Full Length Transmembrane protein(Nanodisc)

Cat. No. ENTPD2-490H **Lot. No.** (See product label)

SPECIFICATION

Product Overview	Recombinant Human ENTPD2 Full Length Transmembrane protein(Q9Y5L3), was expressed in HEK293.
Species	Human
Source	HEK293
Form	Lyophilized from nanodisc solubilization buffer (20 mM Tris-HCl, 150 mM NaCl, pH 8.0). Normally 5% – 8% trehalose is added as protectants before lyophilization. Please see Certificate of Analysis for specific instructions.
Bio-activity	Elisa plates were pre-coated with Flag Tag ENTPD2-Nanodisc (0.2µg/per well). Serial diluted anti-Flag monoclonal antibody solutions were added, washed, and incubated with secondary antibody before Elisa reading. From above data, the EC50 for anti-Flag monoclonal antibody binding with ENTPD2-Nanodisc is 6.083ng/ml.
Molecular Mass	The human full length ENTPD2 protein has a MW of 53.7 kDa.
Storage	Store at -20°C to -80°C for 12 months in lyophilized form. After reconstitution, if not intended for use within a month, aliquot and store at -80°C (Avoid repeated freezing and thawing). Lyophilized proteins are shipped at ambient temperature.
Reconstitution	It is recommended that sterile water be added to the vial to prepare a stock solution of 0.2 ug/ul. Centrifuge the vial at 4°C before opening to recover the entire contents.

 Tel: 1-631-559-9269 1-516-512-3133

 Email: info@creative-biomart.com  Fax: 1-631-938-8127

 45-1 Ramsey Road, Shirley, NY 11967, USA

Full Length Full L.

GENE INFORMATION

Gene Name [ENTPD2 ectonucleoside triphosphate diphosphohydrolase 2 \[Homo sapiens \]](#)

Official Symbol [ENTPD2](#)

Synonyms [ENTPD2](#); ectonucleoside triphosphate diphosphohydrolase 2; CD39L1; CD39 like 1; ecto ATPase; NTPDase 2; ecto-ATPase 2; ecto-ATPDase 2; CD39 antigen-like 1; ecto-ATP diphosphohydrolase 2; NTPDase-2;

Gene ID [954](#)

mRNA Refseq [NM_001246](#)

Protein Refseq [NP_001237](#)

MIM [602012](#)

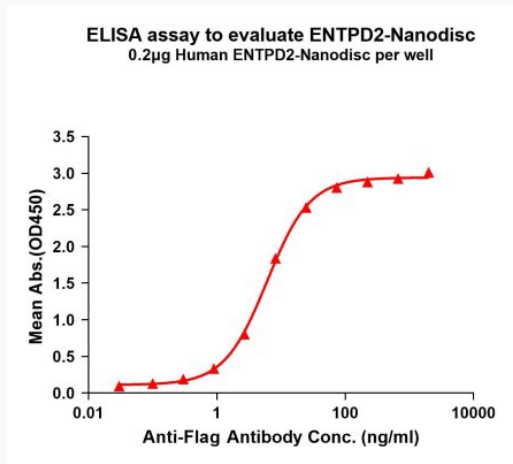
UniProt ID [Q9Y5L3](#)

 Tel: 1-631-559-9269 1-516-512-3133

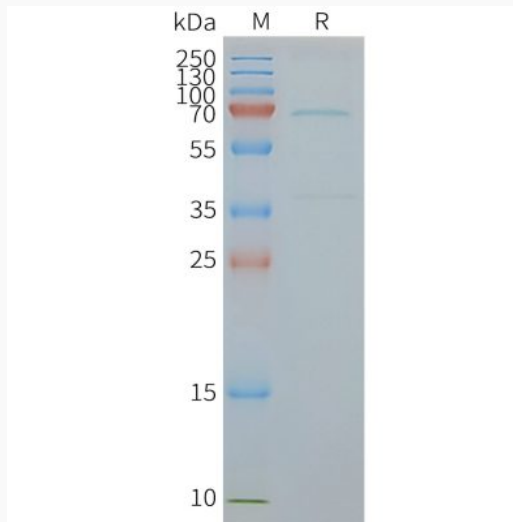
 Email: info@creative-biomart.com  Fax: 1-631-938-8127

 45-1 Ramsey Road, Shirley, NY 11967, USA

Activity



SDS-PAGE



Tel: 1-631-559-9269 1-516-512-3133

Email: info@creative-biomart.com Fax: 1-631-938-8127

45-1 Ramsey Road, Shirley, NY 11967, USA