

# Recombinant Full Length Human ENTPD5 Protein, C-Flag-tagged

**Cat. No.** ENTPD5-1575HFL    **Lot. No.** (See product label)

## SPECIFICATION

<b>Product Overview</b>	Recombinant Full Length Human ENTPD5 Protein, fused to Flag-tag at C-terminus, was expressed in Mammalian cells.
<b>Species</b>	Human
<b>Source</b>	Mammalian Cells
<b>Description</b>	The protein encoded by this gene is similar to E-type nucleotidases (NTPases)/ecto-ATPase/apyrases. NTPases, such as CD39, mediate catabolism of extracellular nucleotides. ENTPD5 contains 4 apyrase-conserved regions which is characteristic of NTPases.
<b>Form</b>	25 mM Tris HCl, pH 7.3, 100 mM glycine, 10% glycerol.
<b>Molecular Mass</b>	47.3 kDa
<b>AA Sequence</b>	<p>MATSWGTVFFMLVVCVCSAVSHRNQQTWFEGIFLSSMCPINVSASTLYGIMFDAG            STGTRIHVYTFVQK MPGQLPILEGEVFDVSVKPLSAFVDQPKQGAETVQGLLEVAK            DSIPRSHWKKTPVVLKATAGLRLPEHK AKALLFEVKEIFRKSPFLVPKGSVSIMDGS            DEGILAWVTVNFLTGQLHGHRQETVGTLDLGGASTQITFL PQFEKTLQTPRGYLTS            FEMFNSTYKLYTHSYLGFGLKAARLATLGALETEGTDGHTFRSACLPRWLEAE WIF            GGVKYQYGGNQEGEVGFEPICYAEVLRVVRGKLVHQPPEEVQRGSFYAFSYYYDRAV            DTD MIDYEKGGIL KVEDFERKAREVCDNLENFTSGSPFLCMDLSYITALLKDGFGFA            DSTVLQLTKVNNIETGWALGATFHL</p>

 Tel: 1-631-559-9269    1-516-512-3133

 Email: [info@creative-biomart.com](mailto:info@creative-biomart.com)     Fax: 1-631-938-8127

 45-1 Ramsey Road, Shirley, NY 11967, USA



LQSLGISHTRTRPLEQKLISEEDLAANDILDYKDDDDKV

**Purity** > 80% as determined by SDS-PAGE and Coomassie blue staining.

**Stability** Stable for 12 months from the date of receipt of the product under proper storage and handling conditions. Avoid repeated freeze-thaw cycles.

**Storage** Store at -80 centigrade.

**Concentration** >50 ug/mL as determined by microplate BCA method.

**Preparation** Recombinant protein was captured through anti-DDK affinity column followed by conventional chromatography steps.

**Protein Families** Transmembrane

**Protein Pathways** Purine metabolism, Pyrimidine metabolism

**Full Length** Full L.

## GENE INFORMATION

**Gene Name** ENTPD5 ectonucleoside triphosphate diphosphohydrolase 5 (inactive) [ Homo sapiens (human) ]

**Official Symbol** ENTPD5

**Synonyms** PCPH; CD39L4; NTPDase-5

**Gene ID** 957

Tel: 1-631-559-9269 1-516-512-3133

Email: [info@creative-biomart.com](mailto:info@creative-biomart.com) Fax: 1-631-938-8127

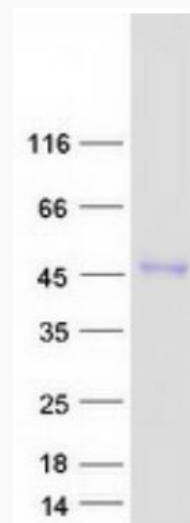
45-1 Ramsey Road, Shirley, NY 11967, USA

mRNA Refseq [NM\\_001249.5](#)

Protein Refseq [NP\\_001240.1](#)

MIM [603162](#)

UniProt ID [O75356](#)



Coomassie blue staining of purified ENTPD5 protein.

 Tel: 1-631-559-9269 1-516-512-3133

 Email: [info@creative-biomart.com](mailto:info@creative-biomart.com)  Fax: 1-631-938-8127

 45-1 Ramsey Road, Shirley, NY 11967, USA