

Active Recombinant Human ENTPD5 Protein, His-tagged

Cat. No. ENTPD5-301H Lot. No. (See product label)

SPECIFICATION

Product Overview	Active Recombinant Human ENTPD5 Protein(O75356) (Met 1-His 428) was expressed in Insect Cells, fused with a polyhistidine tag at the C-terminus.
Species	Human
Source	Insect Cells
ProteinLength	1-428 aa
Form	Lyophilized from sterile 20mM Tris, 500mM NaCl, pH 7.4, 10% gly.
Bio-activity	Measured by its ability to hydrolyze the 5'phosphate groups from the substrate guanosine5'diphosphate (GDP). The specific activity is >7,000 pmoles/min/μg.
Molecular Mass	The secreted recombinant human ENTPD5 consists of 418 amino acids and predicts a molecular mass of 47 kDa. It migrates as an approximately 45 KDa band in SDS-PAGE in SDS-PAGE under reducing conditions.
Endotoxin	< 1.0 EU per μg of the protein as determined by the LAL method.
Purity	> 90 % as determined by SDS-PAGE
Storage	Store it under sterile conditions at -20°C to -80°C upon receiving. Recommend to aliquot the protein into smaller quantities for optimal storage. Avoid repeated freeze-thaw cycles.

 Tel: 1-631-559-9269 1-516-512-3133

 Email: info@creative-biomart.com  Fax: 1-631-938-8127

 45-1 Ramsey Road, Shirley, NY 11967, USA

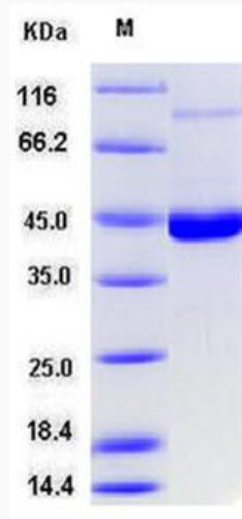
Reconstitution	It is recommended that sterile water be added to the vial to prepare a stock solution of 0.2 ug/ul. Centrifuge the vial at 4°C before opening to recover the entire contents.
protein Refseq-Weblink	http://www.ncbi.nlm.nih.gov/protein/NP_001240.1
Unit ID	O75356
Unit ID-Weblink	https://www.uniprot.org/uniprotkb/O75356
GENE INFORMATION	
Gene Name	ENTPD5 ectonucleoside triphosphate diphosphohydrolase 5 [Homo sapiens]
Official Symbol	ENTPD5
Synonyms	ENTPD5; ectonucleoside triphosphate diphosphohydrolase 5; CD39L4, PCPH, proto oncogene CPH; NTPDase 5; ER-UDPase; CD39-like 4; GDPase ENTPD5; UDPase ENTPD5; proto-oncogene CPH; CD39 antigen-like 4; nucleoside diphosphatase; PcpH proto-oncogene protein; uridine-diphosphatase ENTPD5; guanosine-diphosphatase ENTPD5; PCPH; CD39L4; NTPDase-5; MGC163357; MGC163359;
Gene ID	957
mRNA Refseq	NM_001249
protein Refseq	NP_001240
MIM	603162

 Tel: 1-631-559-9269 1-516-512-3133

 Email: info@creative-biomart.com  Fax: 1-631-938-8127

 45-1 Ramsey Road, Shirley, NY 11967, USA

SDS-PAGE



 Tel: 1-631-559-9269 1-516-512-3133

 Email: info@creative-biomart.com  Fax: 1-631-938-8127

 45-1 Ramsey Road, Shirley, NY 11967, USA