

Recombinant Human ENTPD5 Protein, GST-tagged

Cat. No. ENTPD5-3337H Lot. No. (See product label)

SPECIFICATION

| | |
|-------------------------|--|
| Product Overview | Human ENTPD5 full-length ORF (AAH20966, 1 a.a. - 407 a.a.) recombinant protein with GST-tag at N-terminal. |
| Species | Human |
| Source | Wheat Germ |
| Description | The protein encoded by this gene is similar to E-type nucleotidases (NTPases)/ecto-ATPase/apyrases. NTPases, such as CD39, mediate catabolism of extracellular nucleotides. ENTPD5 contains 4 apyrase-conserved regions which is characteristic of NTPases. [provided by RefSeq, Jan 2009] |
| Molecular Mass | 70.18 kDa |
| AA Sequence | MATSWGTVFFMLVVSCVCSAVSHRNQQTWFEGIFLSSMCPINVSASTLYGIMFDAG STGTRIHVYTFVQKMPGQLPILEGEVFDVSVKPLSAFVDQPKQGAETVQGLLEVAKD SIPRSHWKKTPVVLKATAGLRLLEPHKAKALLFEVKEIFRKSPFLVPKGSVSIMDGSD EGILAWVTVNFLTGQLHGHRQETVGTLDLGGASTQITFLPQFEKTLEQTPRGYLTSF EMFNSTYKLYTHSYLGFGLKAARLATLGALETEGTDGHTFRSACLPRWLEAEWIFG GVKYQYGGNQEGEVGFEP CYAEVLRVVRGKLHQPEEVQRGSFYAFSYYYDRAVDT DMIDYEKGGILKVEDFERKAREVCDNLENFTSGSPFLCMDLSYITALLKDGFGFADST VLQHIISWVN |
| Applications | Enzyme-linked Immunoabsorbent Assay Western Blot (Recombinant protein) |

 Tel: 1-631-559-9269 1-516-512-3133

 Email: info@creative-biomart.com  Fax: 1-631-938-8127

 45-1 Ramsey Road, Shirley, NY 11967, USA

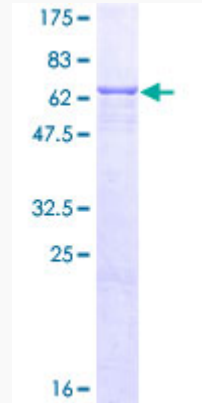
| | |
|-------------------------|---|
| | Antibody Production Protein Array |
| Notes | Best use within three months from the date of receipt of this protein. |
| Storage | Store at -80 centigrade. Aliquot to avoid repeated freezing and thawing. |
| Storage Buffer | 50 mM Tris-HCl, 10 mM reduced Glutathione, pH=8.0 in the elution buffer. |
| GENE INFORMATION | |
| Gene Name | ENTPD5 ectonucleoside triphosphate diphosphohydrolase 5 [Homo sapiens] |
| Official Symbol | ENTPD5 |
| Synonyms | ENTPD5; ectonucleoside triphosphate diphosphohydrolase 5; CD39L4, PCPH, proto oncogene CPH; NTPDase 5; ER-UDPase; CD39-like 4; GDPase ENTPD5; UDPase ENTPD5; proto-oncogene CPH; CD39 antigen-like 4; nucleoside diphosphatase; PcpH proto-oncogene protein; uridine-diphosphatase ENTPD5; guanosine-diphosphatase ENTPD5; PCPH; CD39L4; NTPDase-5; MGC163357; MGC163359; |
| Gene ID | 957 |
| mRNA Refseq | NM_001249 |
| Protein Refseq | NP_001240 |
| MIM | 603162 |
| UniProt ID | O75356 |

 Tel: 1-631-559-9269 1-516-512-3133

 Email: info@creative-biomart.com  Fax: 1-631-938-8127

 45-1 Ramsey Road, Shirley, NY 11967, USA

**Quality Control
Testing**



12.5% SDS-PAGE Stained with Coomassie Blue.

 Tel: 1-631-559-9269 1-516-512-3133

 Email: info@creative-biomart.com  Fax: 1-631-938-8127

 45-1 Ramsey Road, Shirley, NY 11967, USA