

Recombinant Dog Ep300 Protein, His tagged

Cat. No. EP300-01D Lot. No. (See product label)

SPECIFICATION

Product Overview Recombinant Dog Ep300 Protein with His tag was expressed in HEK293.

Species Dog

Source HEK293

Description This gene encodes the adenovirus E1A-associated cellular p300 transcriptional co-activator protein. It functions as histone acetyltransferase that regulates transcription via chromatin remodeling and is important in the processes of cell proliferation and differentiation. It mediates cAMP-gene regulation by binding specifically to phosphorylated CREB protein. This gene has also been identified as a co-activator of HIF1A (hypoxia-inducible factor 1 alpha), and thus plays a role in the stimulation of hypoxia-induced genes such as VEGF. Defects in this gene are a cause of Rubinstein-Taybi syndrome and may also play a role in epithelial cancer.

Molecular Mass The protein has a calculated MW of 44 kDa.

AA Sequence

```

HHHHHHHHKFSAKRLPSTR LGTFLENRVNDFLRRQNHPESEGEVTVRVVHASDKTVE
VKPGMKARFVDSGEMAESFPYRTKALFAFEEIDGV DLCFFGMHVQEYGSDCPPPN
QRRVYISYLD SVHFFRPKCLRTAVYHEILIGYLEYVKKLGYTTGHIWACPPSEGDDYIF
HCHPPDQKIPKPKRLQEWYKMLDKAVSERIVHDYKDFKQATEDRLTSAKELPYFE
GDFWPNVLEESIKELEQEEEEERKREENTSNESTDVTKGDSKNAKKKNNKKT SKNKS
SLSRGNKKKPGMPNVSNDLSQKLYATMEKHKEVFFVIRLIAGPAANSLPPIVDPDPLI
PCDLM DGRDAFLT LARDKHLEFSSLRRAQWSTMCMLVELHTQSQ
    
```

 Tel: 1-631-559-9269 1-516-512-3133

 Email: info@creative-biomart.com  Fax: 1-631-938-8127

 45-1 Ramsey Road, Shirley, NY 11967, USA

Endotoxin	< 1 EU/μg by LAL
Purity	> 90% by SDS-PAGE
Storage	Store it under sterile conditions at -20 to -80 centigrade. It is recommended that the protein be aliquoted for optimal storage. Avoid repeated freeze-thaw cycles.
Concentration	0.25 mg/mL by BCA
Storage Buffer	PBS, pH 7.4, 1% SKL

GENE INFORMATION

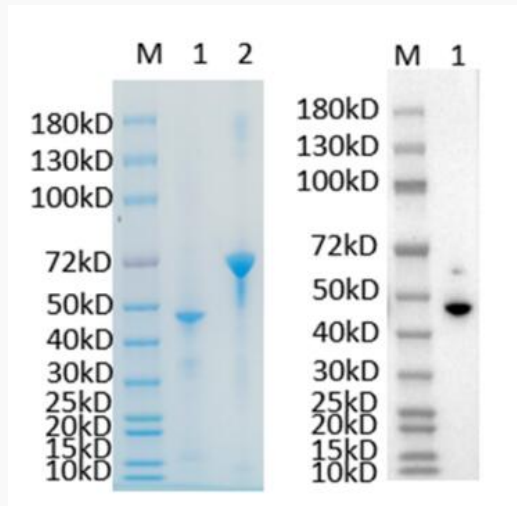
Gene Name	EP300 E1A binding protein p300 [<i>Canis lupus familiaris</i>]
Official Symbol	EP300
Synonyms	EP300; E1A binding protein p300; histone acetyltransferase p300;
Gene ID	100684945
mRNA Refseq	XM_038679753
Protein Refseq	XP_038535681
UniProt ID	A0A8C0P7Y1

 Tel: 1-631-559-9269 1-516-512-3133

 Email: info@creative-biomart.com  Fax: 1-631-938-8127

 45-1 Ramsey Road, Shirley, NY 11967, USA

Reducing 12% SDS-PAGE (CBB stained) and WB (Anti-His Mouse Monoclonal Antibody) analysis profile of purified EP300.



1. EP300-01D
2. BSA

 Tel: 1-631-559-9269 1-516-512-3133

 Email: info@creative-biomart.com  Fax: 1-631-938-8127

 45-1 Ramsey Road, Shirley, NY 11967, USA