

Recombinant Human EP300 Protein (Full Length), N-Flag-tagged

Cat. No. EP300-03H Lot. No. (See product label)

SPECIFICATION

Product Overview	Recombinant p300 protein was expressed in baculovirus expression system as full length protein (accession number NP_001420.2) with an N-FLAG tag.
Species	Human
Source	Insect Cells
Description	This gene encodes the adenovirus E1A-associated cellular p300 transcriptional co-activator protein. It functions as histone acetyltransferase that regulates transcription via chromatin remodeling and is important in the processes of cell proliferation and differentiation. It mediates cAMP-gene regulation by binding specifically to phosphorylated CREB protein. This gene has also been identified as a co-activator of HIF1A (hypoxia-inducible factor 1 alpha), and thus plays a role in the stimulation of hypoxia-induced genes such as VEGF. Defects in this gene are a cause of Rubinstein-Taybi syndrome and may also play a role in epithelial cancer.
Molecular Mass	265.4 kDa
Applications	Recombinant p300 protein is suitable for use in the study of enzyme kinetics, inhibitor screening, and selectivity profiling.
Notes	This product is for research use only and is not for use in diagnostic procedures. This product is guaranteed for 6 months from date of arrival.

 Tel: 1-631-559-9269 1-516-512-3133

 Email: info@creative-biomart.com  Fax: 1-631-938-8127

 45-1 Ramsey Road, Shirley, NY 11967, USA

Stability	This product is guaranteed for 6 months from date of receipt.
Storage	Recombinant proteins in solution are temperature sensitive and must be stored at -80 centigrade to prevent degradation. Avoid repeated freeze/thaw cycles and keep on ice when not in storage.
Concentration	0.4 µg/µL
Storage Buffer	Recombinant p300 protein is supplied in 25 mM HEPES-NaOH pH 7.5, 300 mM NaCl, 10% glycerol, 0.04% Triton X-100 and 0.5 mM TCEP.
Full Length	Full L.

GENE INFORMATION

Gene Name	EP300 E1A binding protein p300 [Homo sapiens (human)]
Official Symbol	EP300
Synonyms	EP300; E1A binding protein p300; p300; KAT3B; MKHK2; RSTS2; histone acetyltransferase p300; E1A-associated protein p300; E1A-binding protein, 300kD; histone butyryltransferase p300; histone crotonyltransferase p300; p300 HAT; protein 2-hydroxyisobutyryltransferase p300; protein lactyltransferas p300; protein propionyltransferase p300; EC 2.3.1.48
Gene ID	2033
mRNA Refseq	NM_001429
Protein Refseq	NP_001420

 Tel: 1-631-559-9269 1-516-512-3133

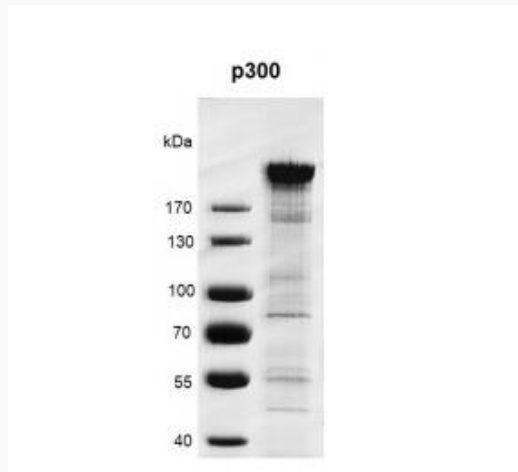
 Email: info@creative-biomart.com  Fax: 1-631-938-8127

 45-1 Ramsey Road, Shirley, NY 11967, USA

MIM 602700

UniProt ID Q7Z6C1

SDS-PAGE



Activity



Tel: 1-631-559-9269 1-516-512-3133

Email: info@creative-biomart.com Fax: 1-631-938-8127

45-1 Ramsey Road, Shirley, NY 11967, USA