

# Active Recombinant Human E1A Binding Protein P300, 302-531aa

Cat. No. EP300-1074H Lot. No. (See product label)

## SPECIFICATION

<b>Species</b>	Human
<b>Source</b>	E.coli
<b>Description</b>	Human p300 and CBP (CREB binding protein) are highly related transcriptional coactivators. Both proteins have been identified through protein interaction assays. In addition to interacting with variety of cellular factors and onco-proteins, loss of the wild type CBP alleles in isolated tumors suggests that CBP/p300 might serve as tumor suppressor. The ability of p300 to acetylate many transcription factors, including p53, E2F, TFIIE, and TFIIF etc. demonstrated a novel mechanism of targeted p300 regulation of gene expression.
<b>Form</b>	Liquid. Supplied in 20 mM Tris-HCl pH 8.0, 20% glycerol, 100 mM KCl, 0.2 mM EDTA and 1 mM DTT.
<b>Purity</b>	> 95% by SDS-PAGE.
<b>Activity</b>	1-5 ng are sufficient for a gel mobility shift assay in a 20µreaction, 50-100 ng are sufficient for reconstituted transcription assay and 100-200 ng are sufficient for a protein-protein interaction assay or an acetylation assay.
<b>Application</b>	Use only for research. Recombinant p300-Ch1 can be used for 1) protein-protein interaction assay, 2) in vitro transcription assay, 3) in vitro acetylation assay and 4) cell growth assay.

 Tel: 1-631-559-9269 1-516-512-3133

 Email: [info@creative-biomart.com](mailto:info@creative-biomart.com)  Fax: 1-631-938-8127

 45-1 Ramsey Road, Shirley, NY 11967, USA

<b>Usage</b>	For in vitro use only.
<b>Storage</b>	Quality guaranteed for 12 months store at -80°C. Avoid freeze / thaw cycles.
<b>GENE INFORMATION</b>	
<b>Gene Name</b>	EP300 E1A binding protein p300 [ Homo sapiens ]
<b>Synonyms</b>	EP300; E1A binding protein p300; p300; KAT3B; E1A-binding protein, 300kD; E1A-associated protein p300; histone acetyltransferase p300; EC 2.3.1.48; p300 HAT; OTTHUMP00000028668; P300
<b>Gene ID</b>	2033
<b>mRNA Refseq</b>	NM_001429
<b>Protein Refseq</b>	NP_001420
<b>MIM</b>	602700
<b>UniProt ID</b>	Q09472
<b>Chromosome Location</b>	22q13.2
<b>Pathway</b>	Adherens junction; Cell cycle; Huntington's disease; Huntington's disease; Huntington's disease; Long-term potentiation; Melanogenesis; Notch signaling pathway; Pathways in cancer; Prostate cancer; Renal cell carcinoma; TGF-beta signaling pathway; Wnt signaling pathway
<b>Function</b>	acetyltransferase activity; histone acetyltransferase activity; metal ion binding;

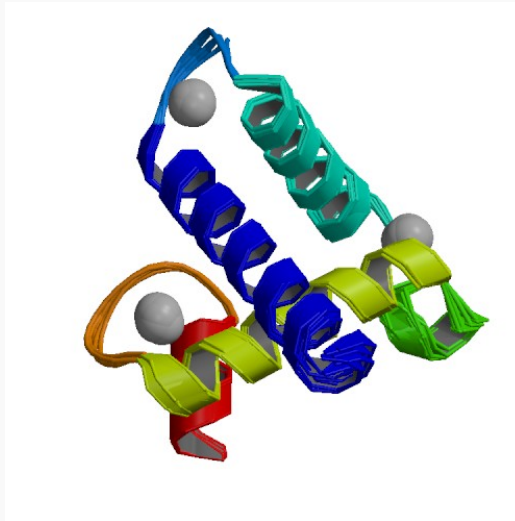
 Tel: 1-631-559-9269 1-516-512-3133

 Email: [info@creative-biomart.com](mailto:info@creative-biomart.com)  Fax: 1-631-938-8127

 45-1 Ramsey Road, Shirley, NY 11967, USA

peroxisome proliferator activated receptor binding; protein C-terminus binding;  
transcription coactivator activity; transcription factor activity; transferase activity; zinc  
ion binding

PDB rendering based  
on 1f81.



 Tel: 1-631-559-9269 1-516-512-3133

 Email: [info@creative-biomart.com](mailto:info@creative-biomart.com)  Fax: 1-631-938-8127

 45-1 Ramsey Road, Shirley, NY 11967, USA