

## Recombinant Human EP300 Protein (bromodomain, 1041-1161), N-His and C-Flag-tagged

Cat. No. EP300-12H Lot. No. (See product label)

### SPECIFICATION

|                         |  |
|-------------------------|--|
| <b>Product Overview</b> | The peptide corresponding to amino acids 1041 - 1161 that contains the bromodomain sequences of EP300 (accession number NM_001429.3) was expressed in E. coli and contains an N-terminal His-Tag and C-terminal FLAG-Tag with an observed molecular weight of 19.1 kDa. It shows binding specificity for acetylated H3K36, H3K56, H4K12, H4K20 and H4K44, as well as acetylated MyoD-K99/K102. The recombinant protein is >90% pure by SDS-PAGE.   |
| <b>Species</b>          | Human  |
| <b>Source</b>           | E.coli   |
| <b>ProteinLength</b>    | 1041-1161  |
| <b>Description</b>      | This gene encodes the adenovirus E1A-associated cellular p300 transcriptional co-activator protein. It functions as histone acetyltransferase that regulates transcription via chromatin remodeling and is important in the processes of cell proliferation and differentiation. It mediates cAMP-gene regulation by binding specifically to phosphorylated CREB protein. This gene has also been identified as a co-activator of HIF1A (hypoxia-inducible factor 1 alpha), and thus plays a role in the stimulation of hypoxia-induced genes such as VEGF. Defects in this gene are a cause of Rubinstein-Taybi syndrome and may also play a role in epithelial cancer. |
| <b>Molecular Mass</b>   | 19.1 kDa   |

 Tel: 1-631-559-9269 1-516-512-3133

 Email: [info@creative-biomart.com](mailto:info@creative-biomart.com)  Fax: 1-631-938-8127

 45-1 Ramsey Road, Shirley, NY 11967, USA

|                       |  |
|-----------------------|--|
| <b>Applications</b>   | Recombinant p300 (1041-1161) is suitable for use in binding assays, inhibitor screening, and selectivity profiling.  |
| <b>Notes</b>          | This product is for research use only and is not for use in diagnostic procedures.   |
| <b>Stability</b>      | This product is guaranteed for 6 months from date of arrival.  |
| <b>Storage</b>        | Recombinant proteins in solution are temperature sensitive and must be stored at -80 centigrade to prevent degradation. Avoid repeated freeze/thaw cycles and keep on ice when not in storage. |
| <b>Concentration</b>  | 5 µg/µL  |
| <b>Storage Buffer</b> | Recombinant p300 (1041-1161) protein expressed in E. coli at a concentration of 5 µg/µL in 25 mM Tris pH 7.4, 150 mM NaCl, 5% Glycerol.  |

## GENE INFORMATION

|                        |  |
|------------------------|--|
| <b>Gene Name</b>       | EP300 E1A binding protein p300 [ Homo sapiens (human) ]  |
| <b>Official Symbol</b> | EP300  |
| <b>Synonyms</b>        | EP300; E1A binding protein p300; p300; KAT3B; MKHK2; RSTS2; histone acetyltransferase p300; E1A-associated protein p300; E1A-binding protein, 300kD; histone butyryltransferase p300; histone crotonyltransferase p300; p300 HAT; protein 2-hydroxyisobutyryltransferase p300; protein lactyltransferas p300; protein propionyltransferase p300; EC 2.3.1.48 |
| <b>Gene ID</b>         | 2033   |
| <b>mRNA Refseq</b>     | NM_001429  |

 Tel: 1-631-559-9269 1-516-512-3133

 Email: [info@creative-biomart.com](mailto:info@creative-biomart.com)  Fax: 1-631-938-8127

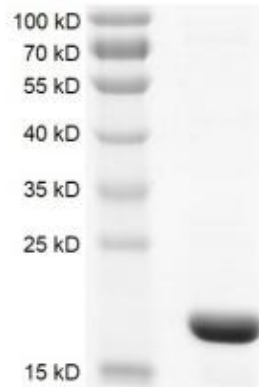
 45-1 Ramsey Road, Shirley, NY 11967, USA

**Protein Refseq** NP\_001420

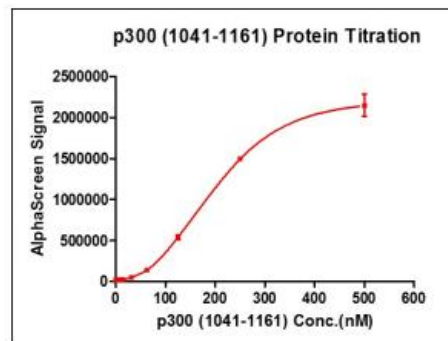
**MIM** 602700

**UniProt ID** Q7Z6C1

**SDS-PAGE**



**Recombinant p300 (1041-1161) activity using AlphaScreen.**



 Tel: 1-631-559-9269 1-516-512-3133

 Email: [info@creative-biomart.com](mailto:info@creative-biomart.com)  Fax: 1-631-938-8127

 45-1 Ramsey Road, Shirley, NY 11967, USA