

Recombinant Human EPC1 Protein, GST-tagged

Cat. No. EPC1-3364H **Lot. No.** (See product label)

SPECIFICATION

| | |
|-------------------------|---|
| Product Overview | Human EPC1 full-length ORF (AAH36529.1, 1 a.a. - 813 a.a.) recombinant protein with GST-tag at N-terminal. |
| Species | Human |
| Source | Wheat Germ |
| Description | This gene encodes a member of the polycomb group (PcG) family. The encoded protein is a component of the NuA4 histone acetyltransferase complex and can act as both a transcriptional activator and repressor. The encoded protein has been linked to apoptosis, DNA repair, skeletal muscle differentiation, gene silencing, and adult T-cell leukemia/lymphoma. Alternative splicing results in multiple transcript variants. [provided by RefSeq, Dec 2012] |
| Molecular Mass | 117.3 kDa |
| AA Sequence | MSKLSFRARALDASKPLPVFRCELDPLHEYASINRAVPQMPTGMEKEESEHHLQ RAISAQQVYGEKRDNMVIPVPEAESNIAYYESIYPGEFKMPKQLIHIQPFSLDAEQPD YDLDESEDEVFNKLLKKMDICPLQFEEMIDRLEKGGQQPVSLQEAKLLLKEDDELIR EVYEWIKKRKNCRGPSLIPSVKQEKRDGSSTNDPYVAFRRRTEKMQTRKNRKNDE ASYEKMLKLRRDLSRAVTILEMIKRREKSKRELLHLEIMEKRYNLGDYNGEIMSEV MAQRQPMKPTYAIIPIITNSSQFKHQEAMDVKEFKVVKQDKADLIRPKRKYEKPKV LPSSAAATPQQTSPAALPVFNAKDLNQYDFPSSDEEPLSQVLSGSSEAEEDNDPDG PFAFRRKAGCQYYAPHLDQTGNWPWTSPKDGGLGDVRYRYCLTTLTVPQRCIGFA |

 Tel: 1-631-559-9269 1-516-512-3133

 Email: info@creative-biomart.com  Fax: 1-631-938-8127

 45-1 Ramsey Road, Shirley, NY 11967, USA

RRRVGRGGRVLLDRAHSDYDSVFHHLDEMLSSPQHSPVNQFANTSETNTSDKSF
 SKDLSQILVNIKSCRWRHFRPRTPSLHSDNDELSCRKLYRSINRTGTAQPGTQTCS
 TSTQSKSSSGSAHFAFTAQYQQHQQLALMQKQQLAQIQQQANSNSSTNTSQG
 FVSKTLDSASAQFAASALVTSEQLMGFKMKDDVVLGIGVNGVLPASGVYKGLHLSST
 TPTALVHTSPSTAGSALLQPSNITQTSSSHSALSHQVTAANSATTQVLIGNNIRLTVP
 SSVATVNSIAPINARHIPRTL SVVPSSALKLAAAANCQVSKVPSSSSVDSVPRENHES
 EKPALNNIADNTVAMEVT

| | |
|-----------------------|---|
| Applications | Enzyme-linked Immunoabsorbent Assay Western Blot (Recombinant protein) Antibody Production Protein Array |
| Notes | Best use within three months from the date of receipt of this protein. |
| Storage | Store at -80 centigrade. Aliquot to avoid repeated freezing and thawing. |
| Storage Buffer | 50 mM Tris-HCl, 10 mM reduced Glutathione, pH=8.0 in the elution buffer. |

GENE INFORMATION

| | |
|------------------------|---|
| Gene Name | EPC1 enhancer of polycomb homolog 1 (Drosophila) [Homo sapiens] |
| Official Symbol | EPC1 |
| Synonyms | EPC1; enhancer of polycomb homolog 1 (Drosophila); enhancer of polycomb homolog 1; Epl1; enhancer of polycomb 1; DKFZp781P2312; |
| Gene ID | 80314 |
| mRNA Refseq | NM_025209 |

 Tel: 1-631-559-9269 1-516-512-3133

 Email: info@creative-biomart.com  Fax: 1-631-938-8127

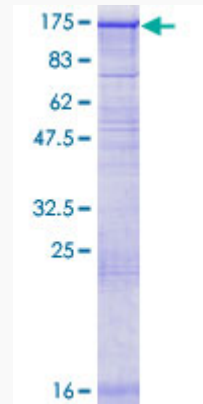
 45-1 Ramsey Road, Shirley, NY 11967, USA

Protein Refseq NP_079485

MIM 610999

UniProt ID Q9H2F5

**Quality Control
Testing**



12.5% SDS-PAGE Stained with Coomassie Blue.

 Tel: 1-631-559-9269 1-516-512-3133

 Email: info@creative-biomart.com  Fax: 1-631-938-8127

 45-1 Ramsey Road, Shirley, NY 11967, USA