

# Recombinant Human EPCAM Protein, Gln24-Lys245, C-His-Avi tagged, Biotinylated

Cat. No. EPCAM-078H Lot. No. (See product label)

## SPECIFICATION

<b>Product Overview</b>	Recombinant human EpCAM/TROP1-C-His-Avi protein was developed from HEK293 and has a target region of C-His-Avi.
<b>Species</b>	Human
<b>Source</b>	HEK293
<b>ProteinLength</b>	Gln24-Lys245
<b>Description</b>	This gene encodes a carcinoma-associated antigen and is a member of a family that includes at least two type I membrane proteins. This antigen is expressed on most normal epithelial cells and gastrointestinal carcinomas and functions as a homotypic calcium-independent cell adhesion molecule. The antigen is being used as a target for immunotherapy treatment of human carcinomas. Mutations in this gene result in congenital tufting enteropathy.
<b>Conjugation/Label</b>	Biotin
<b>Form</b>	Lyophilised
<b>Endotoxin</b>	Endotoxin level was found to be less than 0.1 ng/μg (1 EU/μg).
<b>Notes</b>	FOR RESEARCH USE ONLY (RUO).

 Tel: 1-631-559-9269 1-516-512-3133

 Email: [info@creative-biomart.com](mailto:info@creative-biomart.com)  Fax: 1-631-938-8127

 45-1 Ramsey Road, Shirley, NY 11967, USA

<b>Storage</b>	The lyophilized protein is stable for at least 1 year from date of receipt at -20 centigrade.
<b>Storage Buffer</b>	Lyophilised from 0.2 µm filtered PBS solution pH 7.4. Upon receipt centrifuge vial to ensure maximal product extraction, recommended: 20 sec, 5K RPM
<b>Conjugation</b>	Biotin
<b>GENE INFORMATION</b>	
<b>Gene Name</b>	<a href="#">EPCAM epithelial cell adhesion molecule [ Homo sapiens (human) ]</a>
<b>Official Symbol</b>	<a href="#">EPCAM</a>
<b>Synonyms</b>	EPCAM; epithelial cell adhesion molecule; antigen identified by monoclonal AUA1, M4S1, MIC18, TACSTD1, tumor associated calcium signal transducer 1; 17 1A; 323/A3; CD326; CO 17A; EGP 2; EGP34; EGP40; Ep CAM; ESA; GA733 2; HEA125; KS1/4; KSA; Ly74; MH99; MK 1; MOC31; TACST 1; TROP1; epithelial glycoprotein 314; human epithelial glycoprotein-2; cell surface glycoprotein Trop-1; adenocarcinoma-associated antigen; tumor-associated calcium signal transducer 1; major gastrointestinal tumor-associated protein GA733-2; membrane component, chromosome 4, surface marker (35kD glycoprotein); M4S1; MK-1; DIAR5; EGP-2; MIC18; EGP314; HNPCC8; TACSTD1; GA733-2;
<b>Gene ID</b>	<a href="#">4072</a>
<b>mRNA Refseq</b>	<a href="#">NM_002354</a>
<b>Protein Refseq</b>	<a href="#">NP_002345</a>
<b>MIM</b>	<a href="#">185535</a>

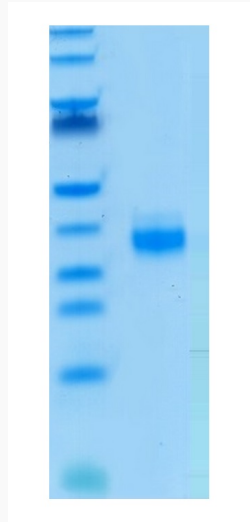
 Tel: 1-631-559-9269 1-516-512-3133

 Email: [info@creative-biomart.com](mailto:info@creative-biomart.com)  Fax: 1-631-938-8127

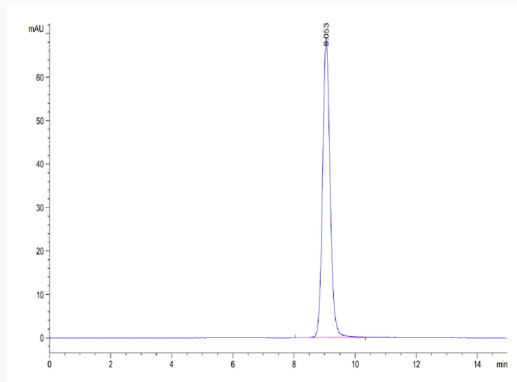
 45-1 Ramsey Road, Shirley, NY 11967, USA

**UniProt ID****P16422**

**Biotinylated Human EpCAM on Tris-Bis PAGE under reduced condition. The purity is greater than 95%.**



**The purity of Biotinylated Human EpCAM is greater than 95% as determined by SEC-HPLC.**



**Immobilized Biotinylated Human EpCAM, His Tag at 0.2 µg/mL (100 µL/Well) on the plate.**

 Tel: 1-631-559-9269 1-516-512-3133

 Email: [info@creative-biomart.com](mailto:info@creative-biomart.com)  Fax: 1-631-938-8127

 45-1 Ramsey Road, Shirley, NY 11967, USA



**Dose response curve  
for Anti-EpCAM  
Antibody, hFc Tag  
with the EC50 of 15.6  
ng/mL determined by  
ELISA.**

 Tel: 1-631-559-9269 1-516-512-3133

 Email: [info@creative-biomart.com](mailto:info@creative-biomart.com)  Fax: 1-631-938-8127

 45-1 Ramsey Road, Shirley, NY 11967, USA