

Recombinant Human EPCAM Protein, His-tagged

Cat. No. EPCAM-097H Lot. No. (See product label)

SPECIFICATION

Product Overview	Recombinant Human EPCAM Protein with His tag was expressed in E. coli.
Species	Human
Source	E.coli
Description	Epithelial cell adhesion and activating molecule (EpCAM/CD326) is a transmembrane glycoprotein that mediates Ca ²⁺ -independent, homophilic adhesions on the basolateral surface of most epithelial cells. EpCAM is not expressed in adult squamous epithelium, but it is highly expressed in adeno and squamous cell carcinomas. Research studies identified EpCAM as one of the first tumor-associated antigens, and it has long been a marker of epithelial and tumor tissue. Investigators have shown that EpCAM is highly expressed in cancer cells.
Molecular Mass	~32 kDa
AA Sequence	QEEVCENYKLAVNCFVNNNRQCQCTSVGAQNTVICSKLAAKCLVMKAEMNGSKL GRRAKPEGALQNNNDGLYDPDCDESGLFKAKQCNGTSMCWCVNTAGVRRTDKDEI TCSERVRTYWIIIELKHKAREKPYDSKSLRTALQKEITTRYQLDPKFITSILYENNVITID LVQNSSQKTQNDVDIADVAYYFEKDVKGESLFHSHKMDLTVNGEQLDLDPGQTLIYY VDEKAPEFSMQGLK
Purity	Transferred into competent cells and the supernatant was purified by NI column affinity chromatography and the purity is > 85% (by SDS-PAGE).

 Tel: 1-631-559-9269 1-516-512-3133

 Email: info@creative-biomart.com  Fax: 1-631-938-8127

 45-1 Ramsey Road, Shirley, NY 11967, USA

Notes	For research use only, not for use in diagnostic procedure.
Storage	Store at 4 centigrade short term. Aliquot and store at -20 centigrade long term. Avoid freeze-thaw cycles.
Storage Buffer	PBS, 4M Urea, pH7.4
GENE INFORMATION	
Gene Name	EPCAM epithelial cell adhesion molecule [Homo sapiens (human)]
Official Symbol	EPCAM
Synonyms	EPCAM; epithelial cell adhesion molecule; antigen identified by monoclonal AUA1 , M4S1, MIC18, TACSTD1, tumor associated calcium signal transducer 1; 17 1A; 323/A3; CD326; CO 17A; EGP 2; EGP34; EGP40; Ep CAM; ESA; GA733 2; HEA125; KS1/4; KSA; Ly74; MH99; MK 1; MOC31; TACST 1; TROP1; epithelial glycoprotein 314; human epithelial glycoprotein-2; cell surface glycoprotein Trop-1; adenocarcinoma-associated antigen; tumor-associated calcium signal transducer 1; major gastrointestinal tumor-associated protein GA733-2; membrane component, chromosome 4, surface marker (35kD glycoprotein); M4S1; MK-1; DIAR5; EGP-2; MIC18; EGP314; HNPCC8; TACSTD1; GA733-2;
Gene ID	4072
mRNA Refseq	NM_002354
Protein Refseq	NP_002345
MIM	185535

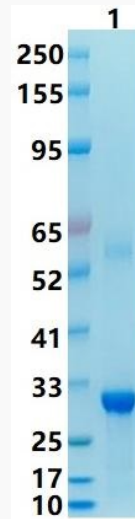
 Tel: 1-631-559-9269 1-516-512-3133

 Email: info@creative-biomart.com  Fax: 1-631-938-8127

 45-1 Ramsey Road, Shirley, NY 11967, USA

UniProt ID P16422

SDS-PAGE



 Tel: 1-631-559-9269 1-516-512-3133

 Email: info@creative-biomart.com  Fax: 1-631-938-8127

 45-1 Ramsey Road, Shirley, NY 11967, USA