

Recombinant Full Length Human EPCAM Protein, C-Flag-tagged

Cat. No. EPCAM-1391HFL **Lot. No.** (See product label)

SPECIFICATION

Product Overview	Recombinant Full Length Human EPCAM Protein, fused to Flag-tag at C-terminus, was expressed in Mammalian cells.
Species	Human
Source	Mammalian Cells
Description	This gene encodes a carcinoma-associated antigen and is a member of a family that includes at least two type I membrane proteins. This antigen is expressed on most normal epithelial cells and gastrointestinal carcinomas and functions as a homotypic calcium-independent cell adhesion molecule. The antigen is being used as a target for immunotherapy treatment of human carcinomas. Mutations in this gene result in congenital tufting enteropathy.
Form	25 mM Tris HCl, pH 7.3, 100 mM glycine, 10% glycerol.
Molecular Mass	32.7 kDa
AA Sequence	MAPPQVLAFLGLLLAATATFAAAQEECVCENYKLAVNCFVNNNRQCQCTSVGAQNT VICSKLAAKCLVMK AEMNGSKLGRRAKPEGALQNNNDGLYDPDCDESGLFKAKQCN GTSTCWCVNTAGVRRTDKDEITCSERVR TYWIIIELKHKAREKPYDSKSLRTALQK EITTRYQLDPKFITSILYENNVITIDLQNSSQKTQNDVDIA DVAYYFEKDKVKGESLFH SKKMDLTVNGEQLDLDPGQTLIYYVDEKAPEFSMQGLKAGVIAVIVVVVIAVV AGIVVLVISRKKRMAKYEKAEIKEMGEMHRELNATRRLEQKLISEEDLAANDILDYKD

 Tel: 1-631-559-9269 1-516-512-3133

 Email: info@creative-biomart.com  Fax: 1-631-938-8127

 45-1 Ramsey Road, Shirley, NY 11967, USA

	DDDKV
Purity	> 80% as determined by SDS-PAGE and Coomassie blue staining.
Stability	Stable for 12 months from the date of receipt of the product under proper storage and handling conditions. Avoid repeated freeze-thaw cycles.
Storage	Store at -80 centigrade.
Concentration	>50 ug/mL as determined by microplate BCA method.
Preparation	Recombinant protein was captured through anti-DDK affinity column followed by conventional chromatography steps.
Protein Families	ES Cell Differentiation/IPS, Transmembrane
Full Length	Full L.
GENE INFORMATION	
Gene Name	EPCAM epithelial cell adhesion molecule [Homo sapiens (human)]
Official Symbol	EPCAM
Synonyms	ESA; KSA; M4S1; MK-1; DIAR5; EGP-2; EGP40; KS1/4; MIC18; TROP1; BerEp4; EGP314; HNPCC8; LYNCH8; MOC-31; Ber-Ep4; TACSTD1
Gene ID	4072
mRNA Refseq	NM_002354.3

 Tel: 1-631-559-9269 1-516-512-3133

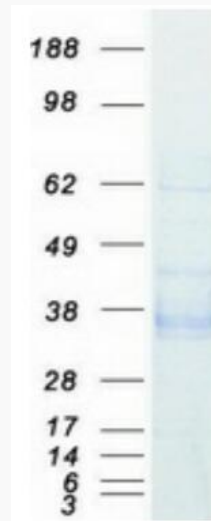
 Email: info@creative-biomart.com  Fax: 1-631-938-8127

 45-1 Ramsey Road, Shirley, NY 11967, USA

Protein Refseq NP_002345.2

MIM 185535

UniProt ID P16422



Coomassie blue staining of purified EPCAM protein.

 Tel: 1-631-559-9269 1-516-512-3133

 Email: info@creative-biomart.com  Fax: 1-631-938-8127

 45-1 Ramsey Road, Shirley, NY 11967, USA