

Active Recombinant Human EPCAM Protein (Gln24-Lys265), C-His tagged, Animal-free, Carrier-free

Cat. No. EPCAM-215H Lot. No. (See product label)

SPECIFICATION

Product Overview	Recombinant Human EPCAM Protein (Gln24-Lys265) with C-His tag was expressed in E. coli and Animal-free as well as Carrier-free.
Species	Human
Source	E.coli
ProteinLength	Gln24-Lys265
Description	Human CD326 also called epithelial cellular adhesion molecule (EpCAM), which is a 28 kDa protein containing 242 amino acid residues. Human CD326 is a transmembrane glycoprotein, which is a marker of cancer. CD326 induces the expression of c-myc, cyclins A & E and e-fabp which is involved the cancer cell proliferation and migration
Form	Lyophilized
Bio-activity	Measure by the ability of the immobilized protein to support the adhesion of the 3T3 cells. The ED50 for this effect is 0.2-1.7 ng/mL.
Molecular Mass	The protein has a calculated MW of 28.36 kDa. The protein migrates as 30 kDa under reducing condition (SDS-PAGE analysis).
Endotoxin	< 0.1 EU/μg of the protein by the LAL method.

 Tel: 1-631-559-9269 1-516-512-3133

 Email: info@creative-biomart.com  Fax: 1-631-938-8127

 45-1 Ramsey Road, Shirley, NY 11967, USA

Purity	>95% as determined by SDS-PAGE analysis.
Storage	This product is stable after storage at: -20 centigrade for 12 months in lyophilized state from date of receipt. -20 or -80 centigrade for 1 month under sterile conditions after reconstitution. Avoid repeated freeze/thaw cycles.
Storage Buffer	Lyophilized from a 0.2 µm filtered solution of PBS, pH 8.0.
Reconstitution	It is recommended to reconstitute the lyophilized protein in sterile H ₂ O to a concentration not less than 200 µg/mL and incubate the stock solution for at least 20 min to ensure sufficient re-dissolved.
Shipping	The product is shipped with polar packs. Upon receipt, store it immediately at -20 centigrade or lower for long term storage.

GENE INFORMATION

Gene Name	EPCAM epithelial cell adhesion molecule [Homo sapiens (human)]
Official Symbol	EPCAM
Synonyms	EPCAM; epithelial cell adhesion molecule; antigen identified by monoclonal AUA1 , M4S1, MIC18, TACSTD1, tumor associated calcium signal transducer 1; 17 1A; 323/A3; CD326; CO 17A; EGP 2; EGP34; EGP40; Ep CAM; ESA; GA733 2; HEA125; KS1/4; KSA; Ly74; MH99; MK 1; MOC31; TACST 1; TROP1; epithelial glycoprotein 314; human epithelial glycoprotein-2; cell surface glycoprotein Trop-1; adenocarcinoma-associated antigen; tumor-associated calcium signal transducer 1; major gastrointestinal tumor-associated protein GA733-2; membrane component, chromosome 4, surface marker (35kD glycoprotein); M4S1; MK-1; DIAR5; EGP-2;

 Tel: 1-631-559-9269 1-516-512-3133

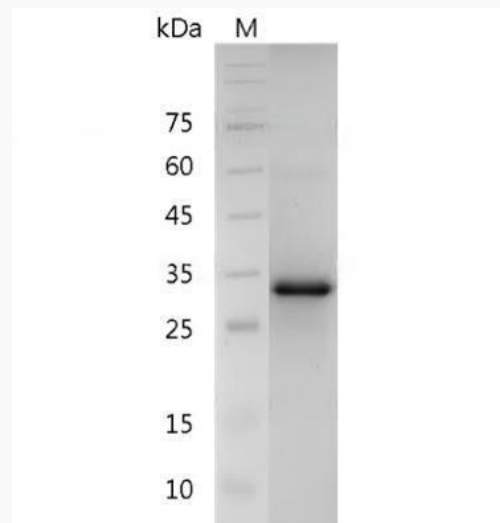
 Email: info@creative-biomart.com  Fax: 1-631-938-8127

 45-1 Ramsey Road, Shirley, NY 11967, USA

MIC18; EGP314; HNPCC8; TACSTD1; GA733-2;

Gene ID 4072**mRNA Refseq** NM_002354**Protein Refseq** NP_002345**MIM** 185535**UniProt ID** P16422

**SDS-PAGE analysis
of recombinant
human CD326.**



Tel: 1-631-559-9269 1-516-512-3133

Email: info@creative-biomart.com Fax: 1-631-938-8127

45-1 Ramsey Road, Shirley, NY 11967, USA