

Recombinant Human EPCAM Protein (Gln24-Gly314), C-6xHis-tagged

Cat. No. EPCAM-285H Lot. No. (See product label)

SPECIFICATION

Product Overview	Recombinant Human EPCAM Protein (Gln24-Gly314) with C-6xHis tag was expressed in HEK293.
Species	Human
Source	HEK293
ProteinLength	Gln24-Gly314
Description	This gene encodes a carcinoma-associated antigen and is a member of a family that includes at least two type I membrane proteins. This antigen is expressed on most normal epithelial cells and gastrointestinal carcinomas and functions as a homotypic calcium-independent cell adhesion molecule. The antigen is being used as a target for immunotherapy treatment of human carcinomas. Mutations in this gene result in congenital tufting enteropathy.
Form	Lyophilized
Molecular Mass	28.2 kDa
Purity	> 95% as determined by SDS-PAGE and Coomassie blue staining.
Storage	Store at -80 centigrade for 12 months (Avoid repeated freezing and thawing)

 Tel: 1-631-559-9269 1-516-512-3133

 Email: info@creative-biomart.com  Fax: 1-631-938-8127

 45-1 Ramsey Road, Shirley, NY 11967, USA

Storage Buffer Lyophilized from sterile PBS, pH 7.4. Normally 5 % - 55 % trehalose is added as protectants before lyophilization.

GENE INFORMATION

Gene Name EPCAM epithelial cell adhesion molecule [Homo sapiens (human)]

Official Symbol EPCAM

Synonyms EPCAM; epithelial cell adhesion molecule; antigen identified by monoclonal AUA1 , M4S1, MIC18, TACSTD1, tumor associated calcium signal transducer 1; 17 1A; 323/A3; CD326; CO 17A; EGP 2; EGP34; EGP40; Ep CAM; ESA; GA733 2; HEA125; KS1/4; KSA; Ly74; MH99; MK 1; MOC31; TACST 1; TROP1; epithelial glycoprotein 314; human epithelial glycoprotein-2; cell surface glycoprotein Trop-1; adenocarcinoma-associated antigen; tumor-associated calcium signal transducer 1; major gastrointestinal tumor-associated protein GA733-2; membrane component, chromosome 4, surface marker (35kD glycoprotein); M4S1; MK-1; DIAR5; EGP-2; MIC18; EGP314; HNPCC8; TACSTD1; GA733-2;

Gene ID 4072

mRNA Refseq NM_002354

Protein Refseq NP_002345

MIM 185535

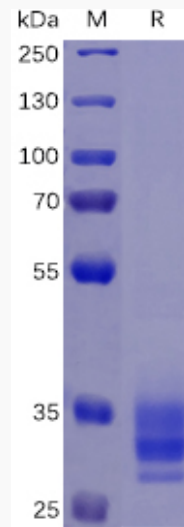
UniProt ID P16422

 Tel: 1-631-559-9269 1-516-512-3133

 Email: info@creative-biomart.com  Fax: 1-631-938-8127

 45-1 Ramsey Road, Shirley, NY 11967, USA

SDS-PAGE



 Tel: 1-631-559-9269 1-516-512-3133

 Email: info@creative-biomart.com  Fax: 1-631-938-8127

 45-1 Ramsey Road, Shirley, NY 11967, USA