

Recombinant Active Human EPCAM Protein, His-tagged(C-ter)

Cat. No. EPCAM-66H Lot. No. (See product label)

SPECIFICATION

Product Overview	Recombinant Active Human EPCAM Protein with His tag (C-ter) was expressed in E. coli.
Species	Human
Source	E.coli
Description	This gene encodes a carcinoma-associated antigen and is a member of a family that includes at least two type I membrane proteins. This antigen is expressed on most normal epithelial cells and gastrointestinal carcinomas and functions as a homotypic calcium-independent cell adhesion molecule. The antigen is being used as a target for immunotherapy treatment of human carcinomas. Mutations in this gene result in congenital tufting enteropathy. [provided by RefSeq, Dec 2008]
Form	Powder
Bio-activity	Determined by the ability of the immobilized protein to support the adhesion of the 3T3 cells. The ED50 for this effect is 0.2-1.7 ng/mL.
AA Sequence	<p>MQEEVCENYKLAVNCFVNNNRQCQCTSVGAQNTVICSKLAAKCLVMKAEMNGSK LGRRAKPEGALQNNNDGLYDPDCDESGLFKAKQCNGTSMCWCVNTAGVVRGSKLGR RAKPEGALQNNNDGLYDPDCDESGLFKAKQCNGTSMCWCVNTAGVRSILYENNVITI DLVQNSSQKTQNDVDIADVAYYFEKDVKGESLFHSHKMDLTVNGEQLDLDPGQTLIY YVDEKAPEFSMQGLK</p>

 Tel: 1-631-559-9269 1-516-512-3133

 Email: info@creative-biomart.com  Fax: 1-631-938-8127

 45-1 Ramsey Road, Shirley, NY 11967, USA

Endotoxin	Endotoxin level is less than 0.1 EU/μg of the protein, as determined by the LAL test.
Purity	> 95% (by SDS-PAGE)
Applications	SDS-PAGE
Notes	For laboratory research only, not for drug, diagnostic or other use.
Storage	Lyophilized protein should be stored at -20°C. After reconstitution, aliquot and store at -20°C or -80°C for up to one month. Storage in frost free freezers is not recommended. Avoid repeated freeze/thaw cycles. Suggest spin the vial prior to opening.
Storage Buffer	PBS (pH 8.0)
Reconstitution	It is recommended to reconstitute the lyophilized protein in sterile water to a concentration not less than 100 μg/mL and incubate the stock solution for at least 20 min at room temperature to make sure the protein is dissolved completely.

GENE INFORMATION

Gene Name	EPCAM epithelial cell adhesion molecule [Homo sapiens]
Official Symbol	EPCAM
Synonyms	EPCAM; epithelial cell adhesion molecule; antigen identified by monoclonal AUA1 , M4S1, MIC18, TACSTD1, tumor associated calcium signal transducer 1; 17 1A; 323/A3; CD326; CO 17A; EGP 2; EGP34; EGP40; Ep CAM; ESA; GA733 2; HEA125; KS1/4; KSA; Ly74; MH99; MK 1; MOC31; TACST 1; TROP1; epithelial glycoprotein 314; human epithelial glycoprotein-2; cell surface glycoprotein Trop-1; adenocarcinoma-associated antigen; tumor-associated calcium signal transducer 1;

 Tel: 1-631-559-9269 1-516-512-3133

 Email: info@creative-biomart.com  Fax: 1-631-938-8127

 45-1 Ramsey Road, Shirley, NY 11967, USA

major gastrointestinal tumor-associated protein GA733-2; membrane component, chromosome 4, surface marker (35kD glycoprotein); M4S1; MK-1; DIAR5; EGP-2; MIC18; EGP314; HNPCC8; TACSTD1; GA733-2;

Gene ID 4072

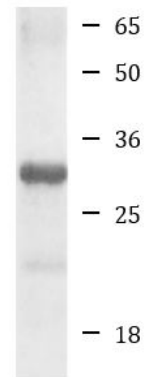
mRNA Refseq NM_002354

Protein Refseq NP_002345

MIM 185535

UniProt ID P16422

SDS-PAGE



Human EpCAM
recombinant protein

 Tel: 1-631-559-9269 1-516-512-3133

 Email: info@creative-biomart.com  Fax: 1-631-938-8127

 45-1 Ramsey Road, Shirley, NY 11967, USA