

## Recombinant Human EPCAM protein, Avi & His-tagged

Cat. No. EPCAM-7817H Lot. No. (See product label)

### SPECIFICATION

**Product Overview** Biotinylated Human EpCAM, His Tag is expressed from human 293 cells (HEK293). It contains AA Gln 24 - Lys 265 (Accession # AAH14785.1). Biotinylation of this product is performed using Avitag technology. Briefly, the single lysine residue in the Avitag is enzymatically labeled with biotin. The biotin to protein ratio is 0.5-1 as determined by the HABA assay.

**Species** Human

**Source** HEK293

**ProteinLength** Gln 24 - Lys 265

**Description** EpCAM is also known as CO171A, EGP, EGP40, GA7332, KSA, M4S, MIC18, MK1, TROP1, hEGP2, and is a pan-epithelial differentiation antigen that is expressed on almost all carcinomas as 17-1A(mAb) antigen. Its constitutional function is being elucidated. It is intricately linked with the Cadherin-Catenin pathway and hence the fundamental WNT pathway responsible for intracellular signaling and polarity. The epithelial cell adhesion molecule (Ep-CAM) is known to express in most epithelial malignancies and was reported as a tumor marker or a candidate of molecular targeting therapy. Ep-CAM cross signaling with N-cadherin involves Pi3K, resulting in the abrogation of the cadherin adhesion complexes in epithelial cells was reported. And Epithelial cell adhesion molecule (Ep-CAM) recently received increased attention as a prognostic factor in breast cancer.

 Tel: 1-631-559-9269 1-516-512-3133

 Email: [info@creative-biomart.com](mailto:info@creative-biomart.com)  Fax: 1-631-938-8127

 45-1 Ramsey Road, Shirley, NY 11967, USA

<b>Predicted N Terminal</b>	Gln 24
<b>Form</b>	Lyophilized from 0.22 µm filtered solution in PBS, pH7.4, 10% trehalose.
<b>Molecular Mass</b>	The protein has a calculated MW of 30 kDa. The protein migrates as 36-44 kDa under reducing (R) condition (SDS-PAGE) due to glycosylation.
<b>Endotoxin</b>	Less than 1.0 EU per µg by the LAL method.
<b>Purity</b>	>95% as determined by SDS-PAGE.
<b>Storage</b>	For long term storage, the product should be stored at lyophilized state at -20°C or lower. Please avoid repeated freeze-thaw cycles. No activity loss is observed after storage at: 4-8°C for 12 months in lyophilized state; -70°C for 3 months under sterile conditions after reconstitution.
<b>Reconstitution</b>	It is recommended that sterile water be added to the vial to prepare a stock solution of 0.2 ug/ul. Centrifuge the vial at 4°C before opening to recover the entire contents.

## GENE INFORMATION

<b>Gene Name</b>	<b>EPCAM epithelial cell adhesion molecule [ Homo sapiens (human) ]</b>
<b>Official Symbol</b>	<b>EPCAM</b>
<b>Synonyms</b>	ESA; KSA; M4S1; MK-1; DIAR5; EGP-2; EGP40; KS1/4; MIC18; TROP1; EGP314; HNPCC8; TACSTD1; adenocarcinoma-associated antigen; cell surface glycoprotein Trop-1; epithelial glycoprotein 314; human epithelial glycoprotein-2; major gastrointestinal tumor-associated protein GA733-2; membrane component, chromosome 4, surface marker (35kD glycoprotein); tumor-associated calcium signal transducer 1; epithelial cell adhesion molecule

 Tel: 1-631-559-9269 1-516-512-3133

 Email: [info@creative-biomart.com](mailto:info@creative-biomart.com)  Fax: 1-631-938-8127

 45-1 Ramsey Road, Shirley, NY 11967, USA

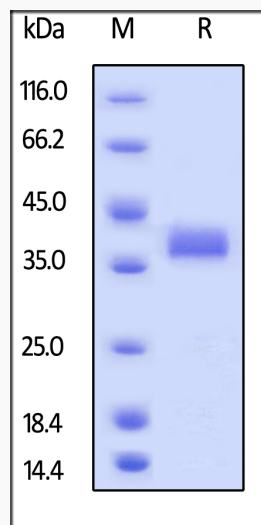
Gene ID 4072

mRNA Refseq NM\_002354.2

Protein Refseq NP\_002345.2

UniProt ID P16422

SDS-PAGE



Biotinylated Human EpCAM, His Tag on SDS-PAGE under reducing (R) condition.  
The gel was stained overnight with Coomassie Blue. The purity of the protein is greater than 95%.

Tel: 1-631-559-9269 1-516-512-3133

Email: [info@creative-biomart.com](mailto:info@creative-biomart.com) Fax: 1-631-938-8127

45-1 Ramsey Road, Shirley, NY 11967, USA