

Active Recombinant Human EPCAM protein, Fc-tagged

Cat. No. EPCAM-81H Lot. No. (See product label)

SPECIFICATION

Product Overview	Active Recombinant Human EPCAM protein(Gln24-Lys265)(NP_002345.1) was expressed in HEK293 with the fused Fc region of human IgG1 at the C-terminus.
Species	Human
Source	HEK293
ProteinLength	24-265 aa
Form	Lyophilized from 0.22µm filtered solution in PBS (pH 7.4).
Bio-activity	Immobilized Human EpCAM, hFc Tag at 2µg/ml (100µl/well) on the plate. Dose response curve for Biotinylated Anti-EpCAM Antibody, hFc Tag with the EC50 of 27.4ng/ml determined by ELISA.
Molecular Mass	The protein has a predicted MW of 54.2 kDa. Due to glycosylation, the protein migrates to 60-70 kDa based on Bis-Tris PAGE result.
Endotoxin	Less than 1 EU per µg by the LAL method.
Purity	> 95% as determined by Bis-Tris PAGE > 95% as determined by HPLC
Storage	-20 to -80°C for 12 months as supplied from date of receipt. -80°C for 3 months after reconstitution. Recommend to aliquot the protein into smaller quantities for optimal storage. Please minimize freeze-thaw cycles.

 Tel: 1-631-559-9269 1-516-512-3133

 Email: info@creative-biomart.com  Fax: 1-631-938-8127

 45-1 Ramsey Road, Shirley, NY 11967, USA

Reconstitution Dissolve the lyophilized protein in distilled water.

GENE INFORMATION

Gene Name [EPCAM epithelial cell adhesion molecule \[Homo sapiens \]](#)

Official Symbol [EPCAM](#)

Synonyms EPCAM; epithelial cell adhesion molecule; antigen identified by monoclonal AUA1 , M4S1, MIC18, TACSTD1, tumor associated calcium signal transducer 1; 17 1A; 323/A3; CD326; CO 17A; EGP 2; EGP34; EGP40; Ep CAM; ESA; GA733 2; HEA125; KS1/4; KSA; Ly74; MH99; MK 1; MOC31; TACST 1; TROP1; epithelial glycoprotein 314; human epithelial glycoprotein-2; cell surface glycoprotein Trop-1; adenocarcinoma-associated antigen; tumor-associated calcium signal transducer 1; major gastrointestinal tumor-associated protein GA733-2; membrane component, chromosome 4, surface marker (35kD glycoprotein); M4S1; MK-1; DIAR5; EGP-2; MIC18; EGP314; HNPCC8; TACSTD1; GA733-2;

Gene ID [4072](#)

mRNA Refseq [NM_002354](#)

Protein Refseq [NP_002345](#)

MIM [185535](#)

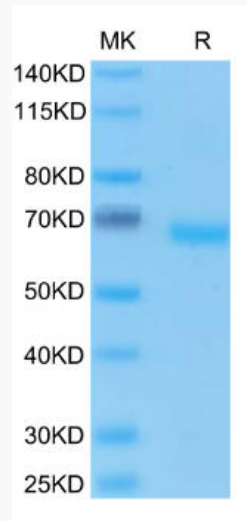
UniProt ID [P16422](#)

 Tel: 1-631-559-9269 1-516-512-3133

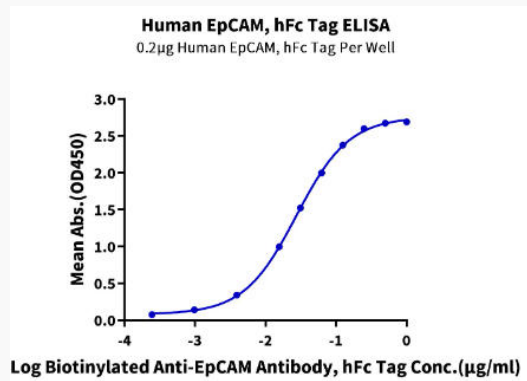
 Email: info@creative-biomart.com  Fax: 1-631-938-8127

 45-1 Ramsey Road, Shirley, NY 11967, USA

Bis-Tris PAGE



ELISA Data



 Tel: 1-631-559-9269 1-516-512-3133

 Email: info@creative-biomart.com  Fax: 1-631-938-8127

 45-1 Ramsey Road, Shirley, NY 11967, USA