

Recombinant Human EPHA1 Protein (Tyr599-Gly842), N-His tagged

Cat. No. EPHA1-3334H **Lot. No.** (See product label)

SPECIFICATION

Product Overview	Recombinant human EPHA1 (Tyr599-Gly842) protein fused with the N-His tag was expressed in E. coli.
Species	Human
Source	E.coli
ProteinLength	Tyr599-Gly842
Molecular Mass	29.80 kDa
Purity	>90 % as determined by SDS-PAGE.
Notes	For research use only.
Storage	Use a manual defrost freezer and avoid repeated freeze thaw cycles. Store at 2 to 8 centigrade for one week. Store at -20 to -80 centigrade for twelve months from the date of receipt.
Storage Buffer	0.01M PBS, pH 7.4, 0.02 % NLS
Reconstitution	Reconstitute in sterile water for a stock solution.
Shipping	In general, proteins are provided as lyophilized powder/frozen liquid. They are

 Tel: 1-631-559-9269 1-516-512-3133

 Email: info@creative-biomart.com  Fax: 1-631-938-8127

 45-1 Ramsey Road, Shirley, NY 11967, USA

shipped out with dry ice/blue ice unless customers require otherwise.

GENE INFORMATION

Gene Name [EPHA1 EPH receptor A1 \[Homo sapiens \(human\) \]](#)

Official Symbol [EPHA1](#)

Synonyms EPHA1; EPH receptor A1; EphA1, EPHT, EPHT1; ephrin type-A receptor 1; EPH; hEpha1; oncogene EPH; eph tyrosine kinase 1; soluble EPHA1 variant 1; soluble EPHA1 variant 2; tyrosine-protein kinase receptor EPH; erythropoietin-producing hepatoma receptor; erythropoietin-producing hepatoma amplified sequence; EPHT; EPHT1; MGC163163;

Gene ID [2041](#)

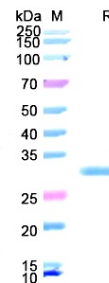
mRNA Refseq [NM_005232](#)

Protein Refseq [NP_005223](#)

MIM [179610](#)

UniProt ID [P21709](#)

SDS-PAGE



 Tel: 1-631-559-9269 1-516-512-3133

 Email: info@creative-biomart.com  Fax: 1-631-938-8127

 45-1 Ramsey Road, Shirley, NY 11967, USA