

Active Recombinant Human EPHA1 Protein, GST-tagged

Cat. No. EPHA1-3374H Lot. No. (See product label)

SPECIFICATION

Product Overview	Human EPHA1 (NP_005223.3, 586 a.a. - 976 a.a.) partial recombinant protein with GST tag expressed in baculovirus infected Sf21 cells.
Species	Human
Source	Insect Cells
ProteinLength	586-976 a.a.
Description	This gene belongs to the ephrin receptor subfamily of the protein-tyrosine kinase family. EPH and EPH-related receptors have been implicated in mediating developmental events, particularly in the nervous system. Receptors in the EPH subfamily typically have a single kinase domain and an extracellular region containing a Cys-rich domain and 2 fibronectin type III repeats. The ephrin receptors are divided into 2 groups based on the similarity of their extracellular domain sequences and their affinities for binding ephrin-A and ephrin-B ligands. This gene is expressed in some human cancer cell lines and has been implicated in carcinogenesis. [provided by RefSeq, Jul 2008]
Form	Liquid
Bio-activity	The activity was measured by off-chip mobility shift assay. The enzyme was incubated with fluorescence-labeled substrate and Mg(or Mn)/ATP. The phosphorylated and unphosphorylated substrates were separated and detected by LabChip 3000.

 Tel: 1-631-559-9269 1-516-512-3133

 Email: info@creative-biomart.com  Fax: 1-631-938-8127

 45-1 Ramsey Road, Shirley, NY 11967, USA

	Substrate: Blk/Lyntide. ATP: 100 µM.
Molecular Mass	72 kDa
Purity	82 % by SDS-PAGE/CBB staining
Applications	Functional Study SDS-PAGE
Storage	Store at -80 centigrade. Aliquot to avoid repeated freezing and thawing.
Storage Buffer	In 50 mM Tris-HCl, 150 mM NaCl, pH 7.5 (0.1% CHAPS, 1 mM DTT, 10% glycerol)

GENE INFORMATION

Gene Name	EPHA1 EPH receptor A1 [Homo sapiens]
Official Symbol	EPHA1
Synonyms	EPHA1; EPH receptor A1; EphA1 , EPHT, EPHT1; ephrin type-A receptor 1; EPH; hEpha1; oncogene EPH; eph tyrosine kinase 1; soluble EPHA1 variant 1; soluble EPHA1 variant 2; tyrosine-protein kinase receptor EPH; erythropoietin-producing hepatoma receptor; erythropoietin-producing hepatoma amplified sequence; EPHT; EPHT1; MGC163163;
Gene ID	2041
mRNA Refseq	NM_005232
Protein Refseq	NP_005223

 Tel: 1-631-559-9269 1-516-512-3133

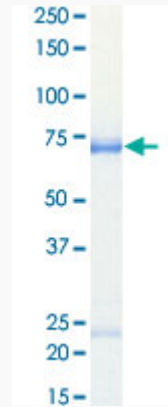
 Email: info@creative-biomart.com  Fax: 1-631-938-8127

 45-1 Ramsey Road, Shirley, NY 11967, USA

MIM 179610

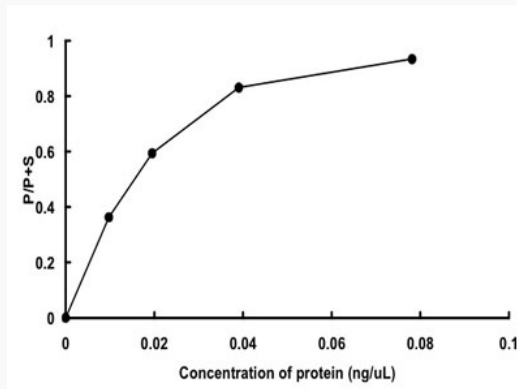
UniProt ID P21709

Quality Control
Testing



Loading 1 μ g protein in SDS-PAGE

Result of activity
analysis



 Tel: 1-631-559-9269 1-516-512-3133

 Email: info@creative-biomart.com  Fax: 1-631-938-8127

 45-1 Ramsey Road, Shirley, NY 11967, USA